

COUNCIL MEETING MINUTES INDEX

AG. PROTECTION AREA-JENSEN, CORDELL & DONA 4
AG PROTECTION AREA-MILLER E. J. REAL ESTATE TRUST: PUBLIC HEARING ... 4
Appointment: Jim Smith to the Willow Park Advisory Board 7
Appointment: Rhodes, Michael to the Solid Waste Advisory Board. 2
BOARD OF EQUALIZATION 5
BUDGET OPENING-1999:PUBLIC HEARING SET.....5
COUNTY FAIR DATES SET: ERICKSON, STEPHEN M. 3
ERICKSON, STEPHEN M: FAIR DATE SET.....3
EXECUTIVE SESSION: LAND ACQUISITION 8
FISCAL PROCEDURE AMENDING BUDGET TRANSFERS: ORDINANCE NO. 99-02.....6
HANCOCK, MARIDENE: LOGAN CANYON SCENIC BY-WAY.....3
Law Enforcement Week: Proclamation 2
LOGAN CANYON SCENIC BY-WAY: HANCOCK, MARIDENE 3
MAY TAX SALE: STONES, TAMRA 6
ORDINANCE NO. 99-02: FISCAL PROCEDURE AMENDING BUDGET TRANSFERS ... 6
PITCHER, PAULA: SOLID WASTE ALTERNATIVES AND EVALUATION.....3
Proclamation: Law Enforcement Week 2
PUBLIC HEARING SET: BUDGET OPENING-1999 5
PUBLIC HEARING: AG. PROTECTION AREA-JENSEN, CORDELL & DONA 4
PUBLIC HEARING: AG. PROTECTION AREA-MILLER E. J. REAL ESTATE TRUST ... 4
Rhodes, Michael: Appointed to the Solid Waste Advisory Board. 2
Smith, Jim: Appointed to the Willow Park Advisory Board 7
SOLID WASTE ALTERNATIVES AND EVALUATION: PITCHER PAULA 3
STONES, TAMRA: MAY TAX SALE 6
WILLOW PARK BUDGET-INTER LOCAL AGREEMENT & WEST PROPERTY
DEVELOPMENT: Akina, Russ 5

CACHE COUNTY COUNCIL MEETING MINUTES

May 11, 1999

The Cache County Council met in a regular session on May 11, 1999 in the County Council Chambers located at 120 North 100 West, Logan, Utah 84321.

ATTENDANCE

Council Chairman, Darrel L. Gibbons and Vice Chairman, H. Craig Petersen were present. Council members present were: Sarah Ann Skanchy, Layne M. Beck, Cory Yeates, Guy Ray Pulsipher and C. Larry Anhder.

Others present were: M. Lynn Lemon, County Executive, Stephen M. Erickson, County Clerk, Tamra Stones, County Auditor, Scott Wyatt, County Attorney, Jim Smith, County Administrative Assistant, Lorene Greenhalgh, County Zoning Administrator, Russ Akina, Logan City Parks and Recreation Director, Paula Pitcher & Roger Sunada, Logan City Solid Waste Department Representatives, Maridene Hancock, Bridgerland Travel Region Director, Fred Houston & David Hatch Forest Service Representatives, members of the local news media and other interested citizens.

CALL TO ORDER

Chairman Darrel L. Gibbons, called the meeting to order at 5:00 p.m. and welcomed all who were in attendance. The Council had met before the regular Council meeting in a workshop discussing water issues for one and one half hours. A number of interested citizens were in attendance at the workshop.

INVOCATION

The invocation was given by Vice Chairman H. Craig Petersen.

AGENDA AND MINUTES

The agenda for the meeting was discussed and amended to add to item 6 a motion to approve going into an Executive Session and add a reading of a Proclamation as part of Executive Lemon's report establishing a Law Enforcement Week in the County.

The minutes of the regular Council meeting held on April 27, 1999 were discussed, corrected and approved.

REPORT OF THE COUNTY EXECUTIVE

The County Executive, M. Lynn Lemon, reported on the following items:

1. Appointments:

Appointment: Rhodes, Michael to the Solid Waste Advisory Board.

A motion to approve the appointment was made by Councilman Yeates. It was seconded and carried unanimously.

2. TV Translator: The TV Translator site problem and appeal is waiting for a court date. Lemon, reported that they are interested in negotiating a long term agreement with the property owners.

3. INGENO Testing: The INGENO software is presently being tested and will be in operation the first part of June. The software will help organize the County's property taxing system. Lynn said it is a challenge to change but will really benefit the County.

4. Proclamation: Law Enforcement Week

A Proclamation establishing the week of May 9-15, 1999 as Law Enforcement Week in Cache County was read by Vice Chairman Petersen.

(See attachment #1)

A motion to adopt the Proclamation was made by Vice Chairman Petersen. It was seconded and carried unanimously.

5. Warrants: The County Warrants for the period of April 28 to May 7, 1999 were presented to the County Clerk for filing.

EXECUTIVE SESSION: LAND ACQUISITION

A motion to convene an Executive Session to discuss land acquisition at the end of the regular Council meeting was made by Councilman Yeates. It was seconded and carried unanimously.

LOGAN CANYON SCENIC BY-WAY: HANCOCK, MARIDENE

Maridene Hancock, the Bridgerland Regional Travel Region Director along with Fred Houston and David Hatch, Forest Service Representatives, appeared before the Council to review proposed sign placement along the Logan Canyon highway, designated as a Scenic By-Way. The location, material makeup and placement of the signs were discussed. The signs will be made of the most durable materials that will withstand weather and most vandalism. They will be placed where other old signs and markers have once been located.

(See attachment #2)

The project is funded by UDOT, the County and other entities. Hancock reviewed a new scenic guide to Logan Canyon and a new Cache Valley Guide that are available at motels and visitor centers in Cache and Rich Counties. A pictorial brochure containing a history of Logan Canyon and Cache Valley was also reviewed. The brochure can be obtained from the visitor centers in Cache and Rich Counties.

The Council thanked Hancock, Houston & Hatch for their efforts to create a scenic by-way with signs through Logan canyon.

SOLID WASTE ALTERNATIVES AND EVALUATION: PITCHER PAULA

Paula Pitcher, an Engineer from the Logan City Solid Waste Department along with the help of Roger Sunada, Logan City Solid Waste Director, presented to the Council, with the help of an over head projector and transparencies a briefing on a Solid Waste Disposal Alternatives study. A summary of the Alternative Study was reviewed.

(See attachment #3)

The Council was asked to evaluate the criteria contained in the study.

COUNTY & FAIR DATES SET: ERICKSON, STEPHEN M.

The date and schedule of events for the 1999 County Fair & Rodeo were presented to the Council for information and approval by Stephen M. Erickson, County Clerk and Fair manager.

(See attachment #4)

A motion to approve the dates was made by Council member Skanchy. The motion was properly seconded and carried unanimously.

PUBLIC HEARING: AG. PROTECTION AREA-E. J. MILLER REAL ESTATE TRUST

PUBLIC HEARING: AG. PROTECTION AREA-JENSEN, CORDELL & DONA

Chairman Gibbons convened a scheduled Public Hearing at 6:00 p.m. to receive input on the establishment of two Agricultural Protection areas in the County. The E. J. Miller Real Estate Trust North of Hyrum and Cordell & Dona Jensen from Logan are requesting that certain parcels of their property be established as Agricultural Protection areas. Lorene Greenhalgh, the County Zoning Administrator was asked to review the two requests. Greenhalgh reviewed the location of the property and told the Council that both requests have met the necessary requirements of the law and have been recommended for approval by the County Planning Commission.

Chairman Gibbons asked the audience for any public comments? There was no public comment presented.

A motion to close the Public Hearings was made by Councilman Yeates. It was seconded and carried unanimously.

Council member Skanchy expressed concern that since we are getting a number of Agricultural Protections areas in the County we should have a method of keeping track of them. Executive Lemon, said that the Resolutions are all recorded but it may be a good idea to have something on the plat. Councilman Anhder suggested that adjacent property owners should be notified that the property next to them is an Ag. Protected area. Executive Lemon will follow up on the matter.

BUDGETARY ITEMS

The following Intra-Departmental budget transfers were considered by the Council:

1. Extension \$500.00

A motion to approve the Extensions transfer request was made by Council member Skanchy. It was seconded and carried unanimously.

2. Jail \$26,000.00

Councilman Yeates moved to approve the Jail transfer request. It was seconded and carried unanimously.

(See attachment #5)

PUBLIC HEARING SET: BUDGET OPENING-1999

Chairman Gibbons explained the need to open the 1999 County Budget for adjustments and the need to hold a public hearing.

Council member Skanchy made a motion to set the public hearing on May 25, 1999 at 6:00 p.m.. It was seconded and carried unanimously.

BOARD OF EQUALIZATION

The Council convened as a Board of Equalization to take action on two mobile home tax valuation appeals.

Tamra Stones, the County Auditor, and Clerk of the Board of Equalization was asked to review the following requested appeals:

1. Shane Ruebush, USU Trailer Court #144, Logan, Utah

(See attachment #6)

A motion to approve the Ruebush appeal was made by Board member Skanchy. It was seconded and carried unanimously.

2. Tom Buirley, PO Box 3285, Logan, Utah.

(See attachment #6)

Board member Skanchy moved to approve the Buirley appeal. It was seconded and carried unanimously.

The Board of Equalization adjourned back into the regular Council meeting.

WILLOW PARK BUDGET-INTER LOCAL AGREEMENT & WEST PROPERTY DEVELOPMENT: AKINA, RUSS

Logan City's Parks and Recreation Director, Russ Akina appeared before the Council to discuss the Willow Park Budget, a revised, inter-local agreement and development of property, West of the fairgrounds jointly owned by the City and County. Akina, reported that the Willow Park Advisory Board has met and reviewed a proposed budget adjustment and the Inter-local agreement. The Board is recommending, that to solve a discrepancy in the budget amounting to a \$40,000.00 error in the budgeting process, when Logan City budgeted \$40,000.00 more than the County, that the reserve account be used to balance the budget. They recommend that the \$40,000.00 over budgeted by Logan City be taken back and then take \$80,000.00 out of the reserve account to balance the budget. Councilman Beck questioned why the error wasn't found

until now and what would happen if the \$80,000.00 transfer wasn't approved. Akina said, that if the transfer wasn't approved, some projects at the fairgrounds would have to be curtailed, such as the \$16,000.00 insulation of the poultry and rabbit barn. Council member Skanchy said, that the error was made and we shouldn't be pointing fingers.

Skanchy moved to approve the recommendations of the Advisory Board and approve the \$80,000.00 transfer from the reserve account. It was seconded and passed unanimously.

Akina said that the revised Inter-Local Agreement is in the hands of Mayor Thompson and Executive Lemon for their review and recommendations. The Agreement will come before the Councils for their review and approval in future meetings.

The Willow Park Budget for next year was reviewed and a draft copy was presented to the Council.

(See attachment #7)

Akina said, that it reflects about a 5% increase from last years. The City and County will, if approved contribute \$240,000.00.

Council member Skanchy moved to approve the fiscal year budget for 1999-2000. It was properly seconded and carried unanimously.

CHAIRMAN GIBBONS LEFT THE MEETING AT 7:00 p.m. AND RETURNED AT 7:20 p.m.. Vice Chairman Petersen conducted the meeting until Gibbons returned.

ORDINANCE NO. 99-02: FISCAL PROCEDURE AMENDING BUDGET TRANSFERS

The adoption of Ordinance will authorize the County Executive to approve any intra-departmental budget transfer under \$1000.00.

(See attachment #8)

Councilman Yeates moved to adopt Ordinance No. 99-02. It was seconded by Councilman Beck. The motion passed unanimously.

MAY TAX SALE: STONE, TAMRA

The County Auditor, Tamra Stones reported that the May Tax Sale will be held on May 27, 1999 at 10:00 a.m. in the County Council Chambers, 120 North 100 West, Logan, Utah. As of May, 11, 1999 there are 17 parcels that are up for sale. However, Stones said that most of

them will have paid their taxes before the sale. The Council reviewed the list and made suggestions to help prevent the sale of certain parcels of property.

RESOLUTION NO. 99-10: MILLER TRUST AG PROTECTION AREA

Resolution No. 99-10 is on the agenda for first reading and will be placed on the next Council meeting agenda for second reading and approval.

RESOLUTION NO. 99-11: JENSEN AG PROTECTION AREA

Resolution No. 99-11 is on the agenda for first reading and will be placed on the next Council meeting agenda for second reading and approval.

PARADE: RICHMOND BLACK & WHITE DAYS

Council members were reminded that they were invited to ride in the Richmond City's Black and White days parade on Saturday May 15, 1999 at 5:00 p.m.

COUNCIL MEMBER REPORTS

Councilman Yeates: Yeates reported that he had attended a Chamber of Commerce board meeting. They are in the process of creating an Internet Web page for their office.

Councilman Anhder: Anhder told the Council that the County needs to have another appointment on the Willow Park Advisory Board. The position has been vacant for months. After some discussion as to who should be appointed it was determined that as in the past the County Executive Administrative assistant should be appointed.

Councilman Pulsipher moved to appoint Jim Smith to the Willow Park Advisory Board. It was seconded and carried unanimously.

Smith will serve on the Board with Councilman Anhder, Clerk Erickson, from the County and Lois Price, Karen Borg and Alan Allred from Logan City.

EXECUTIVE SESSION

A motion to have an Executive session at the end of the regular Council meeting was passed previously during the meeting. All Council members, Attorney, Auditor, Clerk and Executive were present at the Executive Session. The discussion was concerning land acquisition.

ADJOURNMENT

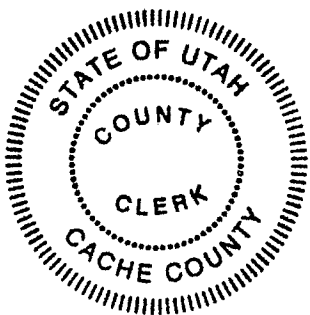
Chairman Gibbons adjourned the meeting at 7:45 p.m..

Jill Zollinger

ATTEST: Jill Zollinger
Chief Deputy County Clerk

Darrel L. Gibbons

APPROVAL: Darrel L. Gibbons
Council Chairman



CACHE COUNTY
CORPORATION

M. LYNN LEMON
COUNTY EXECUTIVE/SURVEYOR
120 NORTH 100 WEST
LOGAN, UTAH 84321
Tel 435-752-5935
Fax 435-787-9386

COUNTY COUNCIL
DARREL L. GIBBONS
CHAIRMAN
H. CRAIG PETERSEN
V. CHAIRMAN
SARAH ANN SKANCHY
C. LARRY ANHDER
GUY RAY PULSIPHER
CORY YEATES
LAYNE M. BECK
STEPHEN M. ERICKSON
CLERK

PROCLAMATION

Whereas, the Cache County Council and Cache County Executive places the safety of its citizens above all other concerns; and

Whereas, the Cache County Sheriff's office provides excellent law enforcement services to the county; and

Whereas, law enforcement officers in our county on a daily basis risk their lives to insure the safety of our citizens; and

Whereas, we as the Cache County Council and Cache County Executive, would like to recognize the accomplishments and hard work of our dedicated law enforcement officers; and

Whereas, the State of Utah and the nation will recognize law enforcement efforts during the week of May 9 thru May 15, 1999.

Whereas, numerous programs have been established in our county and elsewhere throughout the state to emphasize the prevention of criminal activity and many of these programs are sponsored by sheriff's offices.

THEREFORE, be it resolved that the Cache County Council and Cache County Executive, County of Cache, State of Utah hereby proclaims May 9 - 15, 1999 as

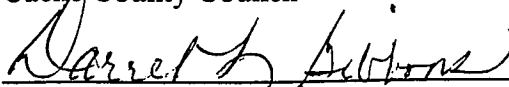
LAW ENFORCEMENT WEEK


and encourage our citizens to acknowledge the efforts of law enforcement officers within Cache County and carefully listen to and learn about the various programs provided by the Sheriff's Office for the protection of our citizens.

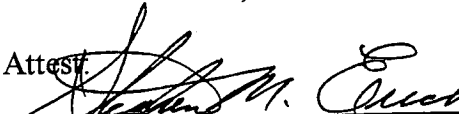
In witness thereof, as Chairman of the Cache County Council and Cache County Executive, we have hereunto set our hand this 11th day of May, 1999.

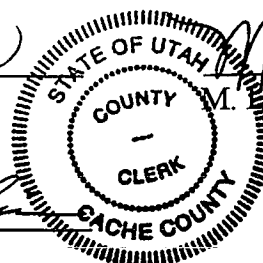
Cache County Council

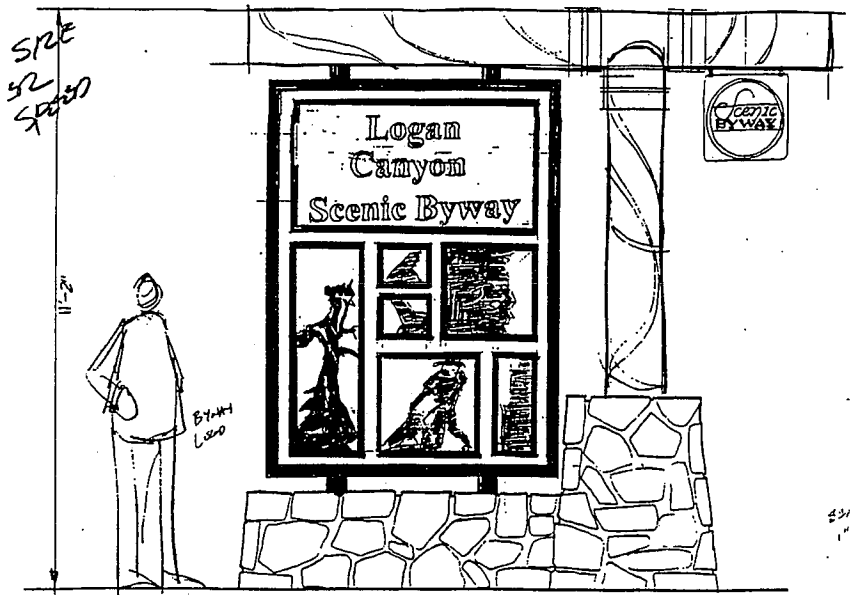
Cache County Executive


Darrel L. Gibbons, Chairman

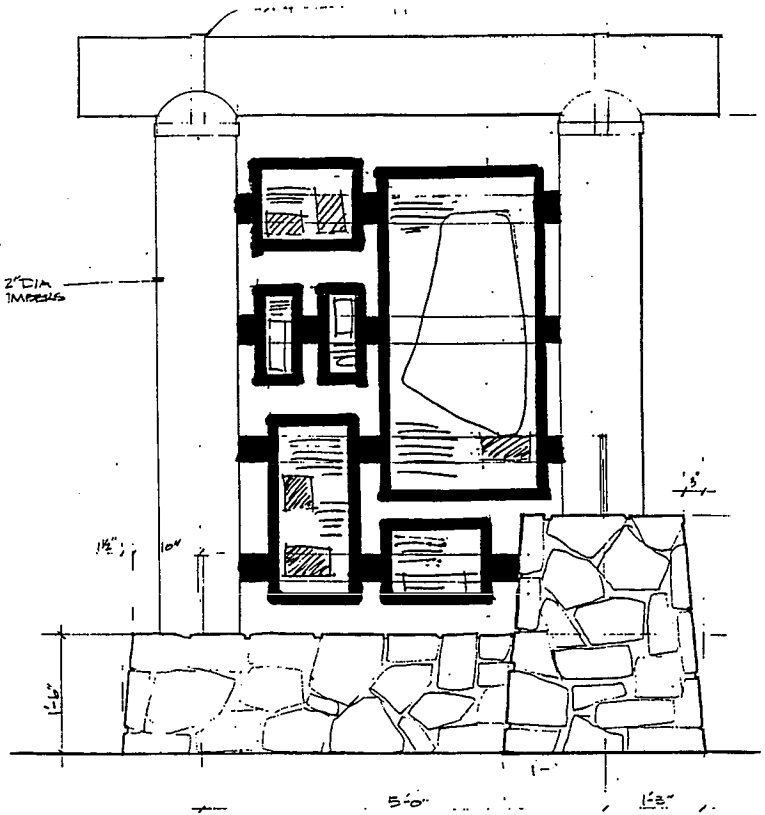

M. Lynn Lemon, Executive

Attest:

Stephen M. Erickson, County Clerk

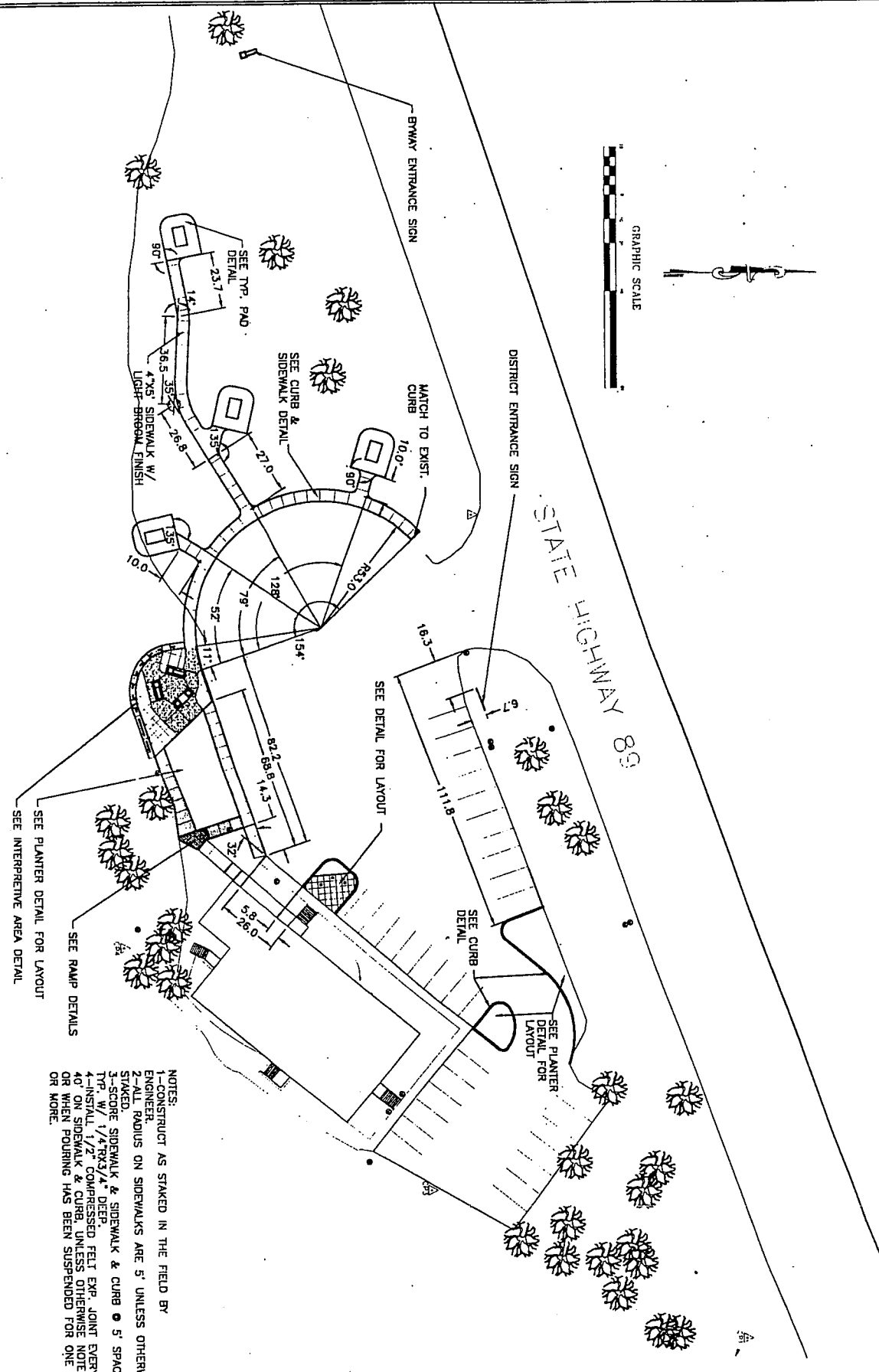




LOGAN CANYON
TYP. ENTRANCE SIGN



TYP. KIOSK



SEE PLANTER DETAIL FOR LAYOUT
SEE INTERPRETIVE AREA DETAIL

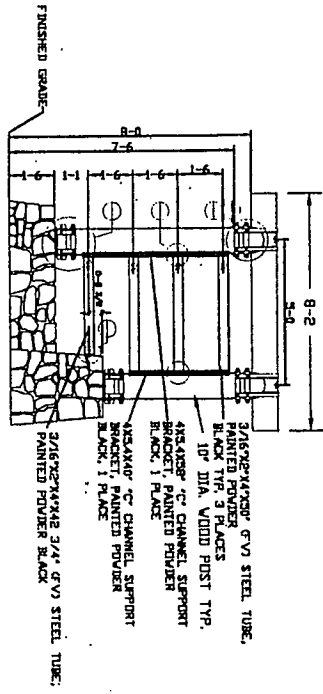
- NOTES:
 1-CONSTRUCT AS STAKED IN THE FIELD BY ENGINEER.
 2-ALL RADII ON SIDEWALKS ARE 5' UNLESS OTHERWISE STAKED.
 3-SCORE SIDEWALK & SIDEWALK & CURB @ 5" SPACING TYP. W/ 1/4" REX 3/4" DEEP.
 4-INSTALL 1/2" COMPRESSED FELT EXP. JOINT EVERY 40' ON SIDEWALK & CURB, UNLESS OTHERWISE NOTED OR WHEN POURING HAS BEEN SUSPENDED FOR ONE HR. OR MORE.

LADY BIRD OVERLOOK
 ISTEA Logan Canyon Scenic Byway
 Layout Plan

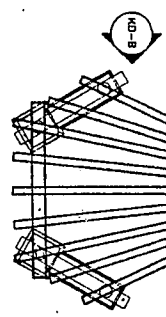
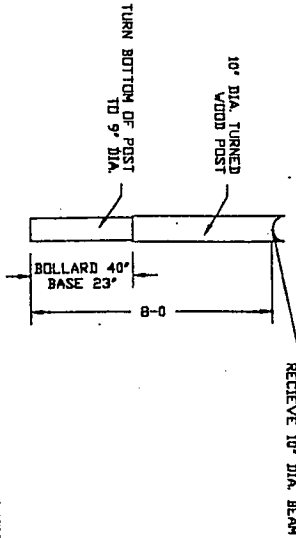
DESIGN	BY: D Hatch
CHECK	# Shurtz
DRAWING	BY: D Hatch
CHECK	# Shurtz
APPROVED	Bernie McDonald
DATE	10/1

U. S. Department of Agriculture
 FOREST SERVICE
 Intermountain Region 1

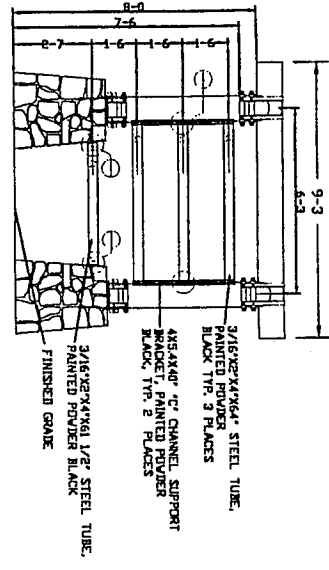
 WASATCH-CACHE NATIONAL FOREST - Logan Ranger District



BOLLARD & BASE ELEV.

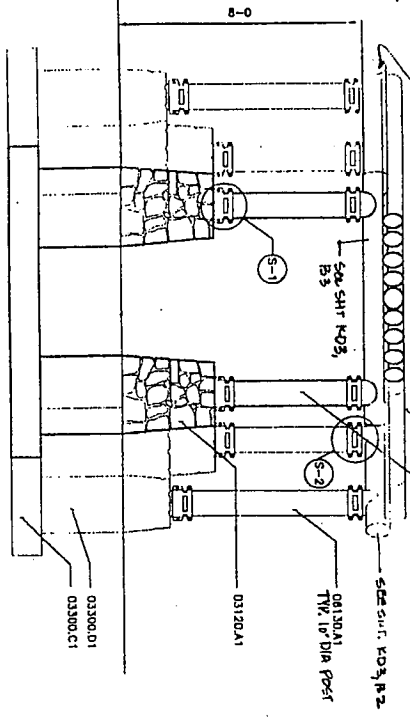


BOLLARD / BOLLARD ELEV.

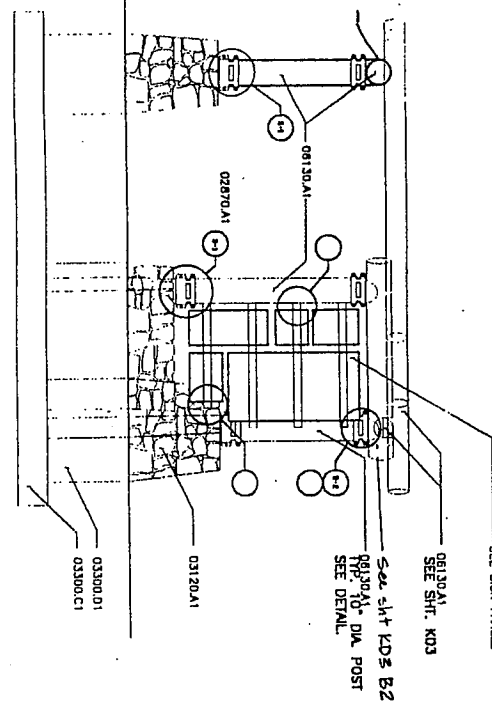


BEAM/COL. CONN. DETAIL

TYP. POST DETAIL



KD-A ELEV.



KD-B ELEV.

KIOSK DETAILS
 ISTE'A Logan Canyon Scenic Byway
 ELEVATIONS OF KIOSKS
 BOLLARD & BASE & 3 PANEL

DESIGN	BY: D Metch CHECK: M Shultz
DRAWING	BY: D Metch CHECK: M Shultz
APPROVED	DATE 8/94

U.S. Department of Agriculture FOREST SERVICE Intermountain Region 4
 SAsATCH-CASCADE NATIONAL FOREST - Logan Ranger District

UAS



City of Logan

Department of Environmental Health

950 West 600 North
Logan, Utah 84321-7806
Phone: (435) 750-9953 Fax: (435) 752-4007

E-Mail: ppitcher@ci.logan.ut.us
Website: www.cvcleanteam.org

TO: Members of the Solid Waste Advisory Board, Logan City Council, Cache County Council, and Association of Mayors

DATE: April 6th, 1999

SUBJECT: Briefing on the Cache County Solid Waste Disposal Alternatives Study

Attached is the summary of the kickoff meeting for the Cache County Solid Waste Disposal Alternatives Study. During the March 15th meeting the Solid Waste Advisory Board (SWAB) members were presented with the future disposal alternatives, project assumptions, and a description of possible evaluation criteria for the study. Each member voted on the evaluation criteria and assigned a weight percentage to each criterion. The weights were combined to come up with overall evaluation criteria for the study (see the attached Summary of the Disposal Alternative Study).

Before proceeding to the next step, the Department of Environmental Health would like to hear your input on the direction of the study thus far. If your council disagrees with either the evaluation criteria to be used or their weighting factors, please contact me or Roger Sunada at (435)-750-9953 before April 26, 1999 and we will attempt to resolve your questions and/or concerns before we move forward with the study. The Department of Environmental Health would be willing to present to your council any available information if it would help you have a better understanding of the project. You are also encouraged to talk to SWAB members if you have any questions or comments on the projects (see the attached SWAB membership list).

The next step in the study will be to compare alternatives based on conceptual costs and evaluation criteria and present them at the next SWAB meeting scheduled for May 17th, 1999. Thank you for your time and consideration, please do not hesitate to contact me if you have any questions.

Sincerely,

Paula Pitcher,
Engineer

Attachments:

Summary of the Disposal Alternative Study
Handouts from the March 15th, 1999 SWAB meeting
Membership list of the Solid Waste Advisory Board



OVERVIEW

At the Solid Waste Advisory Board's meeting on March 15, 1999, the City of Logan's contracted engineer, HDR Engineering, kicked off the Cache County Waste Disposal Alternatives Study. This study evaluates available disposal options following the closure of the landfill in Logan, projected to occur in 15-20 years. The following summarizes the steps of the study and the direction offered by the Solid Waste Advisory Board regarding Step 1, Disposal Alternatives & Evaluation Criteria. If our direction to the study is not consistent with the direction desired by your body, or if you have questions, please advise Roger Sunada at (435) 750-9953 or Paula Pitcher at (435) 713-6682, and they will obtain your input on the study.

SUMMARY OF THE ALTERNATIVE STUDY

The study is divided into the following three steps.

Step 1:

Identify Disposal Alternatives & Evaluation Criteria.

This is the current step, and at this time the engineer is requesting direction regarding alternatives for consideration, assumptions, evaluation criteria, and the relative importance of the criteria.

A. Alternatives and Assumptions reviewed and tentatively accepted by the Solid Waste Advisory Board:

1. **New Cache County Landfill**

1a) **Area-Fill Site:** This is an engineering design for flat or nearly flat terrain.

1b) **Canyon-Fill Site:** This is an engineering design for terrain comprised of ravines or hills.

Study Assumptions:

- Minimum 50 year life for the new landfill
- Only Cache County land will be considered for the new landfill
- The new landfill sites will be evaluated as non site-specific; if an in-County landfill is determined the best option, the subsequent step will search for appropriate locations.
- A 20-mile direct haul distance will be assumed from the waste centroid, which is assumed to be the center of the City of Logan.
- No new road construction will be necessary.
- All these assumptions may be re-evaluated and re-compared to other options if a landfill siting study is conducted.

2. Share in a regional **Box Elder County Landfill**

2a) **Transfer Station** is constructed for collection trucks to discharge and transfer trailers to haul.

2b) **Transfer Station with Material Recovery** is constructed to increase recycling.

2c) **Direct Haul** in collection trucks to the landfill.

Study Assumption

Truck transfer station is located at the current landfill.

3. **Rail Haul to ECDC Landfill, Carbon County, UT**

2a) **Transfer Station** is constructed for collection trucks to discharge for haul in rail cars.

2b) **Transfer Station with Material Recovery** is constructed to increase recycling.

Study Assumption

Rail transfer station is located on existing rail lines to ECDC Landfill.

Evaluation of Cache County Waste Disposal Alternatives Project Briefing

Preliminary Disposal Alternatives

1- NEW CACHE COUNTY LANDFILL

- 1a- Area Fill Site
- 1b- Canyon Fill Site

2- BOX ELDER COUNTY

- 2a- Transfer Station Only
- 2b- Transfer Station/MRF
- 2c- Direct Haul

3- RAIL HAUL TO ECDC

- 3a- Transfer Station Only
- 3b- Transfer Station/MRF

4- INCINERATION

Disposal Alternative Assumptions

- Alternative 2 ✓ Truck Transfer Stations Located at Current Landfill
- Alternative 3 ✓ Rail Transfer Stations Located on Existing Rail Lines to ECDC
- Alternative 1 ✓ Minimum 50 Year Life for New Landfill
 - ✓ New Landfill Sites are in Cache County only
 - ✓ New Landfill Sites are Non Site-Specific
 - ✓ 20 Mile Direct Haul Distance from Waste Centroid
 - ✓ No Road Construction Necessary

Evaluation of Cache County Waste Disposal Alternatives Project Briefing

UDEQ Landfill Location Restrictions

- ➔ Wetlands Unless No Other Practicable Alternative
- ✓ 200' from Faults
- ✓ 1000' from Parks/Wilderness/W&S Rivers
- ➔ Threatened/Endangered Species (Bald Eagle, Peregrine Falcon, Maguire's Primrose)
- ✓ Important Farmlands
- ✓ 1/4 Mile From Dwellings/Schools
- ➔ Historic Places and Archeological Sites
- ➔ Subsidence Area, Dam Flood Area, Mine, Salt Dome
- ➔ Groundwater Less Than 5' Below Liner
- ➔ Sole Source Aquifers or Source Protection Areas

- ✓ land eliminated in Campo Study
- ➔ not adequately addressed in Campo Study

UDEQ Landfill Location Restrictions (Can Design Against)

- ✓ 5,000 to 10,000 feet from Airport Runways
- ✓ Floodplains
- ➔ Seismic Impact Zones
- ➔ Unstable Areas

- ✓ land eliminated in Campo Study
- ➔ not adequately addressed in Campo Study

*Evaluation of Cache County Waste Disposal Alternatives
Project Briefing*

*Land Eliminated in Campo Study
But Allowed in Regulations*

- National Forest Land and Forest Zone
- Groundwater Recharge Zones
- Incorporated City Limits
- Built-Up Areas (U of U Map)
- Waterbodies/Watercourses with 100' Buffer

*Overall Evaluation Criteria
(Preliminary)*

- Cost
- Local Control
- Control of Liability
- Reliability
- Local Environmental Impacts
- Public Support

Evaluation of Cache County Waste Disposal Alternatives Project Briefing

Overall Evaluation Criteria (Reviewed and Accepted by SWAB)

#	Criteria	Description of Criteria	Weight
1	<i>COST</i>	Capital and operating costs, including transportation and resulting fees.	39%
2	<i>LOCAL CONTROL</i>	The degree to which decisions such as rates, hours of operation, free or reduced disposal for clean-ups, & operating practices are set by local elected officials.	16%
3	<i>CONTROL OF LIABILITY</i>	Control of measures to offset operating liability or environmental problems and the potential for liability for clean-up costs under CERCLA (Superfund).	10.5%
4	<i>RELIABILITY</i>	The likelihood service will be uninterrupted. High reliability is related to low system complexity.	11%
5	<i>LOCAL ENVIRONMENTAL IMPACTS</i>	Impacts to County residents related to traffic, ground & surface water, noise, litter, dust, etc.	13%
6	<i>LOCAL SUPPORT</i>	The degree to which the alternative may be supported or opposed by County residents.	10.5%

Next Steps

- County Council, City Council, and Mayor's Association members score evaluation criteria
- Present results of comparison of alternatives at next scheduled SWAB meeting (June, 1999)
- Present results of comparison of alternatives at City, County, and Mayor's Association

CACHE COUNTY FAIR AND GREAT AMERICAN WEST RODEO

1999 SCHEDULE OF EVENTS

DRAFT

MONDAY AUGUST 9th

Enter Home Arts
Enter Artists' Pictures
Enter 4-H Exhibits (EXCEPT GARDEN)
Fashion Review 4 H (Pavilion)
4-H English Horse Show, North Logan Arena

11:00 a.m. to 7:00 p.m.
11:00 a.m. to 7:00 p.m.
3:00 p.m. to 7:00 p.m.
Check-in time 10:00 a.m.
5:00 p.m.

TUESDAY AUGUST 10th

Enter Home Arts
Enter Artists' Pictures
Judging 4-H
Judging Home Arts
4-H Sr/Int Western Horse Show

9:00 a.m. to 11:00 a.m.
9:00 a.m. to 12 Noon
9:00 a.m.
11:00 a.m.
6:00 p.m.

WEDNESDAY, AUGUST 11th

Concession & Midway in the evening.

4-H Jr. Pony Western Horse Show
Judging Home Arts
Enter Hay Contest & Judging
Enter Open Class Livestock
Enter 4-H-FFA Livestock:
 Hogs
 Beef
 Lambs
Enter 4-H Garden Exhibits
Enter Rabbits
Enter Poultry
Enter Pigeons

8:00 a.m.
11:00 a.m. to 3:00 p.m.
8:00 a.m. to 10:00 a.m.
4:00 p.m. to 8:00 p.m.

6:00 a.m. to 9:00 a.m.
4:00 p.m. to 5:30 p.m.
5:30 p.m. to 7:00 p.m.
12: Noon to 2:00 p.m.
12:00 p.m. to 4:00 p.m.
4:00 p.m. to 7:00 p.m.
8:30 p.m. to 4:00 p.m.

THURSDAY, AUGUST 12th

Enter Flowers--Home Arts Building
Enter Crops-Fruits & Vegetables
Judging Rabbits
Judging Pigeons
Judging Poultry
4-H Afternoon at the Fair
Enter Agr. Dept. Except open dairy
Enter Goats
Jr. Dairy Show-Cache Arena
Market Lamb Judging-Sheep Fitting & Showmanship
Open Sheep Show in the Livestock Pavilion

8:00 a.m. to 11:00 a.m.
8:00 a.m. to 10:00 a.m.
9:00 a.m.
9:00 a.m.
9:00 a.m.
1:00 p.m. to 5:00 p.m.
4:00 p.m. to 6:00 p.m.
12:00 p.m. to 5:00 p.m.
9:00 a.m. to 2:00 p.m.

8:30 a.m. to Completio

DRAFT

Thursday Continued:

Market Beef Judging, Fitting & Showmanship in the Cache Arena 3:00 p.m. to 6:00 p.m.
COMMERICAL BOOTHS TO BE IN OPERATION 1:00 p.m.
4-H Pre-Rodeo Games & Year-End Horse Show Awards 5:30 p.m.
YOUTH DANCE-MOUNTAIN CREST CAPRIELLES-PAVILION 8:30 p.m.
FAMILY NIGHT AT THE RODEO \$25.00 PER FAMILY- NO 7:30 p.m. Rodeo at 8:00 p.m.
RESERVED SEATS GENERAL ADMISSION \$5.00 Children 4 yr to 12 yr \$4.00 3 yrs. & under free.

FRIDAY AUGUST 13th

Open Youth Horse Show 8:00 a.m.
Market Hog Judging & Fitting & Showmanship in Livestock Pavilion 8:00 a.m. to 1:00 p.m.
Beef Show-Open Class & Commerical Heifer Class 9:00 a.m. to 12:00 noon
Dairy Show-Open Class in the Cache Arena 12:00 noon to Completion
Jr. Livestock Judging Contest-Livestock Pavilion 1:00 p.m. to Completion
Goat Show 10:00 a.m.
PRE-RODEO 7:30 p.m.
YOUTH DANCE-MOUNTAIN CREST CAPRIELLES-PAVILION 8:30 p.m.
RODEO JUSTIN BOOT NIGHT- RESERVED SEATS \$8.00 8:00 p.m.
General Admission \$6.00 Children 4yrs to 12yr old \$5.00 3yrs & under free

SATURDAY AUGUST 14th

Open Adult Horse Show 8:00 a.m.
JUNIOR LIVESTOCK SALE (BEEF, SWINE, LAMBS) 9:00 a.m. Cache Arena
4-H Model Rocket Launch 9:00 a.m. to 11:00 a.m.
Square Dancing in the Pavilion 7:00 p.m. to 10:00 p.m.
4-H Building Exhibit Checkout Time 9:00 p.m. to 11:00 p.m.
Poultry, Rabbits Checkout time 8:00 p.m.
PRE RODEO 7:30 p.m.
RODEO 8:00 p.m.

RESERVED SEATS \$9.00, General Admission \$7.00 Children 4 to 12 \$6.00 3yrs & under free.

HOME ARTS EXHIBITS WILL BE CHECKED OUT ON MONDAY AUGUST 16th FROM 1:00 p.m. to 6:00 p.m..

REQUEST FOR INTRA-DEPARTMENTAL BUDGET TRANSFER

DEPARTMENT: Extension
DATE: 5/6/99

Amount to be transferred - (rounded to the nearest dollar) \$500.00

Transfer From -
Line Item No. : 10-4610-620
Fund Designation: Travel - 4-H Agent
Original Budget: \$1500.00
Current Budget: \$1500.00
Expenditures to date: \$ 509.90
Balance before transfer: \$ 990.10
Balance after transfer: \$ 540.10

Transfer To -
Line Item No. : 10-4610-621
Fund Designation: Miscellaneous Service-Staff Assistant
Original Budget: \$800.00
Current Budget: \$800.00
Expenditures to date: \$844.16
Balance before transfer: (\$ 44.16)
Balance after transfer: \$405.84

Description of needs and purpose of transfer —
Assistant has been filling in as agent during interim period of filling intern and agent positions.

David A. Heber
Department Head

Recommendation: Approval Disapproval
Comments:

Date: 5/6/99

Jamra Stokes
Cache County Auditor

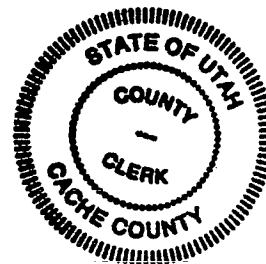
Recommendation: Approval Disapproval
Comments:

Date: 5/6/99

M. Bryan Hansen
Cache County Executive

Consented by the Cache County Council meeting in regular session on the 11th day of May, 1998.

Stephen G. Ewens
Cache County Clerk



REQUEST FOR INTRA-DEPARTMENTAL BUDGET TRANSFER

DEPARTMENT: JAIL
 DATE: 4-May-99

Amount to be transferred -- (rounded to the nearest dollar) \$26,000.00

Transfer From ---
 Line Item No. : 10-4230-620
 Fund Designation: MISCELLANEOUS SERVICES

Original Budget:	<u>\$235,425.00</u>
Current Budget:	<u>\$235,425.00</u>
Expenditures to date:	<u>\$39,087.00</u>
Balance before transfer:	<u>\$196,338.00</u>
Balance after Transfer:	<u>\$170,338.00</u>

Transfer To ---
 Line Item No. : 10-4230-742
 Fund Designation: SPECIAL GRANT EQUIPMENT

Original Budget:	<u>\$4,168.00</u>
Current Budget:	<u>\$4,168.00</u>
Expenditures to date:	<u>\$0.00</u>
Balance before transfer:	<u>\$4,168.00</u>
Balance after Transfer:	<u>\$30,168.00</u>

Description of needs and purpose of transfer ---

JAIL WORK DIVERSION PROGRAM WAS GIVEN A GRANT OF \$26,000 TO PURCHASE A 15 PASSENGER VAN. THESE VANS ARE VERY SCARCE. THERE IS ONE BEING HELD UNTIL BUDGET APPROVAL IS OBTAINED. A BUDGET OPENING WILL FOLLOW TO REPLACE THESE TRANSFERRED FUNDS.

 Department Head

Recommendation: [] Approval [] Disapproval
 Comments:

Date: 5/5/99

Samra Stones
 Cache County Auditor

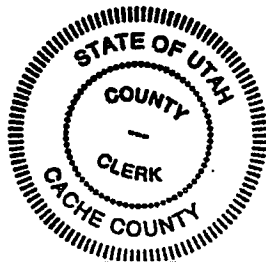
Recommendation: [] Approval [] Disapproval
 Comments:

Date: 5/11/99

M. Suzanne Hansen
 Cache County Executive

Consented by the Cache County Council meeting in regular session on the 11th day of May, 1999.

[Signature]
 Cache County Clerk



Cache County Board of Equalization
May 11, 1999

Mobile Homes

The following is a recap of the appeals received.

I.D. NUMBER	OWNER'S NAME	PRE-BOARD MARKET VALUE	PRE-BOARD TAXABLE VALUE	BOARD ADJUSTED MARKET VALUE	BOARD ADJUSTED TAXABLE VALUE
1981 Camelot Trailer Home 14' x 70'	Shane Ruebush USU Trailer #144 Logan, UT 84321	\$25,970	\$14,285	\$16,000	\$8,800
The appraiser believes the value is closer to \$16,000. Mr Ruebush paid less than market value. The trailer is located in the USU Trailer Park and can only be used by students. The park will be in use until 2011. Recommend \$16,000 as new market value.					

I.D. NUMBER	OWNER'S NAME	PRE-BOARD MARKET VALUE	PRE-BOARD TAXABLE VALUE	BOARD ADJUSTED MARKET VALUE	BOARD ADJUSTED TAXABLE VALUE
1981 Camelot Trailer Home 14' x 74'	Tom Buirley P O Box 3285 Logan, UT 84323	\$27,454	\$15,100	\$23,265	\$12,795
Changed square footage to 14'x70' after a site visit. Looked up comparable sales. In July, 1998 a 980 sq. ft trailer sold for \$23,000. Recommend a value of \$23,265					

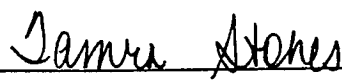
Board of Equalization Changes

This listing was approved by the Cache County Council, acting as the Board of Equalization on the 11th. day of May 1999.



 Darrel L. Gibbons, Chairman

ATTEST:



 Tamra Stones, Clerk Board of Equalization

**CITY OF LOGAN
WILLOW PARK FUND
ANALYSIS OF OPERATION
FISCAL YEARS 1996-97 TO 1999-00**

DRAFT

	1996-97	1997-98	YTD Mar 31, 99	Budget 1999-00
Revenues				
<i>Contribution - City of Logan</i>	187,440	191,526	199,834	240,000
<i>Contribution - Solid Waste Fund</i>	30,000	0	0	0
<i>Contribution - Resaurant Tax</i>	65,866	21,687	60,000	132,000
<i>Contribution - State of Utah</i>	73,370	71,370	100,733	134,934
<i>Contribution - Private sources</i>	7,064	8,594	5,158	7,000
<i>Fairground revenue</i>	79,529	88,981	45,768	108,500
<i>Animal sales</i>	751	764	1,071	623
<i>Miscellaneous</i>	15,542	15,835	2,770	14,500
Total	459,562	398,757	415,334	637,557
Expenditures				
Fairground				
<i>Personal services</i>	67,812	48,944	73,917	123,079
<i>Supplies</i>	26,818	31,999	18,392	29,140
<i>Other services & charges</i>	102,253	169,435	142,081	136,349
<i>Capital outlays</i>	111,867	58,243	18,572	135,000
Total Fairground	308,750	308,621	252,962	423,568
Sports Complex				
<i>Personal services</i>	34,441	38,534	29,297	44,450
<i>Supplies</i>	1,853	1,993	1,472	3,362
<i>Other services and services</i>	19,866	16,640	11,044	23,732
<i>Capital outlays</i>	0	0	0	39,000
Total Sports Complex	56,160	57,167	41,813	110,544
Logan Regional Zoo				
<i>Personal services</i>	173,430	184,837	146,806	221,719
<i>Supplies</i>	11,973	13,925	10,861	17,500
<i>Other services & charges</i>	31,718	33,671	46,108	38,226
<i>Capital outlays</i>	10,077	10,470	0	66,000
Total Logan Regional Zoo	227,198	242,903	203,775	343,445
Total Expenditures	592,108	608,691	498,550	877,557
Net gain (loss)	(132,546)	(209,934)	(83,216)	(240,000)
<i>Contribution from Cache County</i>	182,712	189,350	133,823	240,000
Net gain (loss) after contributions	50,166	(20,584)	50,607	0
Budget as Adopted By City:				
<i>Cache County Contribution</i>	201,440	191,526	266,446	240,000
<i>Budgeted by County</i>	187,440	191,526	227,256	240,000
<i>Amount required to be covered by reserves</i>	14,000	0	39,190	0

7

CACHE COUNTY

ORDINANCE NO. 99-02

AN ORDINANCE AMENDING SECTION 2-106(A) OF THE CACHE COUNTY FISCAL PROCEDURES ORDINANCE.

The Cache County Council, in a regular meeting, lawful notice of which had been given, finds that it is in the best interest of the management and administration of the County that Section 2-106(A) of the Cache County Fiscal Procedures Ordinance be amended, with respect to intra-departmental transfers:

Now therefore be it ordained by the County Council of Cache County, Utah that:

Section 1. Amendment of Section 2-106(A)

Section 2-106(A) of the Cache County Fiscal Procedures Ordinance is hereby amended to read, as follows:

2-106. Transfers.

- (A) With the consent of the County Council and upon written notice to the County Auditor, the County Executive may authorize an intra-departmental transfer over \$1,000.00 in any department, as to any unencumbered or unexpended appropriation balance or any part from one expenditure account to another within the department during the budget year, or may transfer an excess expenditure of one or more line items; provided, that the total of all excess expenditures or encumbrances does not exceed the total unused appropriation within the department at the close of the budget year. Transfers of \$1,000.00 or less may be authorized directly by the County Executive.

Section 2. Effect.

With the exception of this Amendment, in all other respects, the provisions of the Cache County Fiscal Procedures Ordinance shall remain in full force and effect.

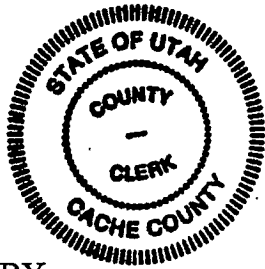
Section 3. Effective Date.

This Ordinance shall become effective immediately upon publication, in the manner required by law.

This Ordinance was adopted by the Cache County Council on the 11th day of May, 1999, upon the following vote:

	Voting in Favor	Voting Against	Abstaining
Gibbons	<u>Absent</u>	_____	_____
Petersen	<u>x</u>	_____	_____
Skanchy	<u>x</u>	_____	_____
Anhder	<u>x</u>	_____	_____
Pulsipher	<u>x</u>	_____	_____
Yeates	<u>x</u>	_____	_____
Beck	<u>x</u>	_____	_____

CACHE COUNTY COUNCIL



By: *Darrel L. Gibbons* h 046
Darrel L. Gibbons, Chairman
H. Craig Petersen, Vice Chairman

ATTESTED BY:

Stephen M. Erickson
Stephen M Erickson
Cache County Clerk

Publication Date: May 30, 1999