

COUNCIL MEETING MINUTES INDEX

AGING PROGRAM UPDATE: CAZIER, MARCEE ..... 2  
CAZIER, MARCEE: AGING PROGRAM UPDATE ..... 2  
DRUG & ALCOHOL PROGRAM UPDATE: WIESE, DOUG ..... 3  
ERICKSON, STEPHEN M: FAIR, COUNTY REPORT ..... 3  
FAIR, COUNTY REPORT: ERICKSON, STEPHEN M. .... 3  
MCBRIDE, WELLS AND PAULINE: PROPERTY TAX SETTLEMENT ..... 5  
PARADISE TROUT & BERRY DAYS: INVITATION ..... 6  
PROPERTY TAX SETTLEMENT: MCBRIDE, WELLS AND PAULINE ..... 5  
RURAL LAND ISSUES: DISCUSSION ..... 6  
STONES, TAMRA: PROPERTY VALUATION CHANGE REPORT ..... 4  
TV TRANSLATOR: DISCUSSION ..... 5  
PROPERTY VALUATION CHANGE REPORT: STONES, TAMRA ..... 4  
WEBER COUNTY-CACHE COUNTY- POWDER MOUNTAIN AGREEMENT:  
DISCUSSION ..... 6  
WIESE, DOUG: DRUG & ALCOHOL PROGRAM UPDATE..... 3  
YOUTH CORRECTION NEW FACILITY: DISCUSSION ..... 6

## CACHE COUNTY COUNCIL MEETING MINUTES

August 25, 1998

The Cache County Council met in a regular session on August 25, 1998 in the County Council Chambers located at 120 North 100 West, Logan, Utah 84321.

### ATTENDANCE

Council Chairman, Darrel L. Gibbons and Vice Chairman Cory Yeates were present. Council members present were: Layne M. Beck, Guy Ray Pulsipher, H. Craig Petersen and C. Larry Anhder. Council member Skanchy was absent and excused.

Others present were: County Executive, M. Lynn Lemon, County Clerk, Stephen M. Erickson, County Auditor, Tamra Stones, County Attorney, Scott Wyatt, County Sheriff, Lynn Nelson. County Agent, Don Huber, Senior Citizen Center Director, Marcee Cazier, Bear River Health Drug and Alcohol Coordinator, Doug Wiese, Representatives of the local news media and other interested citizens.

### CALL TO ORDER

Chairman Gibbons, called the meeting to order at 5:00 p. m. and welcomed all who were in attendance.

### INVOCATION

The invocation was given by Councilman Guy Ray Pulsipher.

### AGENDA & MINUTES

The agenda for the meeting was discussed and adjusted to delete item 9a, Adoption of an Ordinance to close 3700 North and to delete item 8a setting a public hearing on the 1998 budget. The public hearing was set during the last Council meeting.

The minutes of the regular Council meeting held on August 11, 1998 were discussed, corrected and approved.

### REPORT OF THE COUNTY EXECUTIVE

The County Executive, M. Lynn Lemon reported on the following items:

COUNCIL MEETING  
MINUTES 08/25/98

1. Film Commission, Northern Utah: The funding for the Northern Utah Film Commission, which has recently been created, was questioned during the last Council meeting. Lemon told the Council that he has been told that funding is a pass through process from the State and will not affect the County or Chamber budgets.

2. Courts Building Meeting: Lemon, has met with the Standing Committee on Facility on Planning, regarding Court System priority. The Committee is proposing programming funds for 1999 and land acquisition and constructing in the year 2000. Lemon said, that if that is the case, we may be able to do something with this building in 2001. Lemon will continue to meet with them and he will continue to keep the Council updated on the matter. A meeting with the Judges and State Legislators is next week to see if they can help in the process.

3. Road Transfer Jurisdiction: A meeting with the State, regarding a proposal to transfer certain highways to Cities and Counties, was attended by Executive Lemon, in Provo. The majority of those who attended from other Cities and Counties were not in favor of any highway transfer. In fact some said that if the State does transfer the roads to them, they may just abandon the roads.

4. State Sheriff's Meeting: On September 24<sup>th</sup> a meeting with other County Sheriff's in the State will be held. They will be discussing future jail house needs. Council members have been invited to attend the meeting. Lemon, said that he encouraged the meeting to see if some kind of analyzes, of what future needs are and how those needs can be accomplished.

5. Smart Map System: Contracts have been signed and the system will be working in October. The GIS system will need to continue and funding is available from the Assessor's assessing and collecting fund. The Council was in favor of using those funds to continue with GIS.

6. Warrants: The warrants for the periods of August 7 through August 11 and August 12 through August 21, 1998 were presented to the County Clerk for filing.

**AGING PROGRAM UPDATE: CAZIER, MARCEE**

The Director of the Senior Citizen Center, Marcee Cazier appeared before the Council to update them on that organization's activities. Cazier, gave out a number of pamphlets giving information on the different programs that they have at the Center. The Center relies on a large number of volunteers who have contributed nearly eleven thousand hours saving \$56,000.00 at the minium wage rate. They presently are delivering 155 meals a day through the meal's on-wheel's program. A new delivery truck has been acquired and they are delivering every week day now. The change in age population was discussed. During the ten-year period of 1980 to 1990 there has been a 14% increase in people over the age of 65. Cazier said that they are going to

increase the number of transportation vans to three and they will need additional volunteer drivers. The front office is going to be remodeled costing around \$9,000.00. Cazier said that the time is coming when the County will have to budget more money for the Center. The Philosophy and Definition of the Center were reviewed by Cazier.

(See attachment #1)

The Council thanked Cazier for the report and update and wished her continued success.

**DRUG & ALCOHOL PROGRAM UPDATE: WIESE, DOUG**

The Director of the Substance Abuse Program at the Bear River Health Department, Doug Wiese, updated the Council on the Departments work and services. Wiese, reviewed a year end printout of numbers dealing with clients treated and substance being abused.

(See attachment #2)

The substance being most overall abused in the area is alcohol. However, in our youth, Marijuana is the highest and it continues to grow. They are mandated by the Government to give special treatment for single mothers and pregnant women. They are now working with the hospitals Day Spring Program to provide out patient treatment. State funding on certain services is now available, that they haven't had before and they can provide different levels of treatment. There are more male clients than female clients, this is because the male population seems more willing to get treatment than the females. Wiese said that there is still a major substance abuse problem among women that are never treated or reported.

**FAIR, COUNTY REPORT: ERICKSON, STEPHEN M.**

The County Clerk, Stephen M. Erickson, and who some how has the privilege to manage the County Fair every year since his election to that office (eight years) appeared before the Council to give an annual report of the just concluded 1998 County Fair.

Erickson, reported that the fair was very successful and went on without any major problems. A written memo about the fair was previously sent to the Council.

(See attachment #3)

Erickson expressed appreciation to all those who worked so hard to put together an outstanding fair again this year. The Council thanked Erickson and those who helped with the fair.

**BUDGETARY MATTERS: INTRA-DEPARTMENTAL BUDGET TRANSFERS**

The following Intra-Departmental budget transfers were presented for approval:

1. Surveyor: \$800.00

(See attachment #4)

**Vice Chairman Yeates moved to approve the Surveyors request. It was seconded and carried unanimously.**

2. Clerk: \$1000.00 & \$300.00

(See attachment #5)

**Councilman Petersen moved to approve the Clerks requests. It was seconded and carried unanimously.**

**BOARD OF EQUALIZATION**

**Councilman Anhder moved to adjourn from the regular council meeting and convene a Board of Equalization. It was seconded and carried unanimously.**

**BOARD HEARING: SCHEDULE**

The Board reviewed the dates to hear tax payer appeals and assignments were made. Board members Beck and Yeates will attend the hearing on Wednesday the 26<sup>th</sup> and Pulsipher will attend on Friday the 28<sup>th</sup> of August. Board member Skanchy was assigned to attend on Friday the 4<sup>th</sup> of September.

**VALUATION CHANGE REPORT: STONES, TAMRA**

The secretary to the Board, County Auditor Tamra Stones, reviewed the recommended changes in property valuations.

(See attachment #6)

Stones, said that they have dealt with 62 parcels and have reduced their valuation by \$942,803.00.

**A motion to approve the valuation changes was made by Board member Petersen. It was seconded and carried unanimously.**

**PROPERTY TAX SETTLEMENT: MCBRIDE, WELLS AND PAULINE**

The County Assessor is recommending that delinquent property taxes on property owned by Wells and Pauline McBride be canceled for hardship purposes. The property is now in the Greenbelt program.

(See attachment #7)

**Board member Pulsipher moved to accept the recommendation of the Assessor and approve canceling the McBride's delinquent taxes. It was properly seconded and carried unanimously.**

Board member Pulsipher said, the county appraisers are doing outstanding work and they should be complimented. Other Board members concurred with Pulsipher.

**Board member Yeates moved to adjourn from the Board of Equalization and reconvene the regular Council meeting. It was seconded and carried unanimously.**

**TV TRANSLATOR: DISCUSSION**

Two weeks ago on July 28<sup>th</sup>, 1998 the Council held a workshop with State TV specialists and different TV Channel representatives to determine a future TV Translator location, with new equipment that will provide better TV reception to the citizens in the County. At the workshop it was suggested that the county invest in more than one TV translator site to provide translator service. Tests have proven that additional sites will provide better TV and make it possible to deliver TV to more homes in the County than with one location. The estimated cost for the change would be around \$250,000.00. Chairman Gibbons, said that he has concerns about spending that much money now, especially when we are looking to construct a new county office facility. Councilman Anhder said, that he receives more phone calls because of bad TV than anything else being done in the County. He suggested taking the \$250,000.00 out of the nearly, four million dollar fund-balance the County has and establish additional sites. Anhder figures, that it would cost about fifty cents per household based on \$100,000.00 valuation, for property tax, in the county to make the change. Executive Lemon said, that we will have to pay maintenance on both locations because of the present contract. This would be around \$50,000.00 a year. It was suggested that the \$250,000.00 figure be part of the Budget Opening Public Hearing at the next Council meeting on September 8, 1998. Councilman Petersen, recommended that we should have it pinned down on what the cost will actually be and what we are going to get for our dollars. Executive Lemon, will follow up on Petersen's recommendation. The Council will continue the

discussion on the TV Translator during the next Council meeting.

**RURAL LAND ISSUES: DISCUSSION**

The County has been invited to participate with other rural Counties in the State to speak as one voice on rural issues. Some Councilmen questioned the need to join, because the County only has Forest Service land and no BLM land. Chairman Gibbons, asked that we get more of the specifics on what the organization is going to do and what the cost to join is. The Council will continue discussing the matter at the next Council meeting.

**YOUTH CORRECTION NEW FACILITY: DISCUSSION**

The State is going to build a new Youth Correction Facility on 600 West & 2000 North, in Logan. Executive Lemon told the Council that the state offered local entities the option to hold a Public Hearing on the matter. The County was considering holding the hearing but because the facility is going to be built in Logan City and Logan City will have the Public Hearing, the County will not.

**WEBER COUNTY-CACHE COUNTY- POWDER MOUNTAIN AGREEMENT:  
DISCUSSION**

The Council discussed an agreement with Weber County regarding the property taxes received from the Powder Mountain Recreation area located on the boundary between Weber and Cache Counties, East of Ogden. Weber County is providing most of the services to the area. Our County Auditor, Tamra Stones said, that very little tax money is received from them but because Weber County provides the services they want all the taxes. The agreement was addressed as first reading and it will be placed on the next agenda for second reading with some changes.

**PARADISE TROUT & BERRY DAYS: INVITATION**

The Council was invited to the Paradise Trout and Berry Days event on August 29, 1998.

**COUNCIL MEMBER REPORTS**

Councilman Pulsipher: Pulsipher reported that the committee to choose a consultant to write the new land use ordinances has been organized. Members come from the Planning Commission and Board of Adjustments as well as Councilman Pulsipher and Executive Lemon. The County-Wide Planner, Mark Teuscher will serve as an advisor.

Pulsipher also reported that a resident from his area is concerned about the present animal or dog ordinance. Bill McCreary, from North of Paradise wants the Ordinance rewritten to provide stronger fines etc.


**COUNCIL MEETING  
MINUTES 08/25/98**

Councilman Beck: Beck informed the Council of an invitation to be part of the 2002 Olympic games. They are invited to attend an Olympic Forum to give in put on the games. The Forum will be on September 8 at 1:00 p.m. in the Salt Palace in Salt Lake.

Councilman Anhder: Anhder reported, on a meeting held with the Logan City Solid Waste Department. They are getting a new logo and are going to advertise to get more people to recycle some of their recyclables. Anhder, expressed concern that the money spent to try and reduce the garbage in the land fill by one percent is too much.

**ADJOURNMENT**

Chairman Gibbons adjourned the meeting at 7:05 p.m..



**ATTEST: Stephen M. Erickson  
County Clerk**



**APPROVAL: Darrel L. Gibbons  
Council Chairman**



## THE SENIOR CENTER PHILOSOPHY

The philosophy of the senior center movement is based on these premises: that aging is a normal developmental process; that human beings need peers with whom they can interact and who are available as a source of encouragement and support; and that adults have the right to a voice in determining matters in which they have a vital interest.

In accordance with these premises, senior centers adhere to the following beliefs:

- Older adults, like all people, are individuals with ambitions, capabilities, and creative capacities.
- They are capable of continued growth and development.
- They have certain basic needs, including opportunities for relationships and for experiencing a sense of achievement.
- They need both access to sources of information and help for personal and family problems, and the opportunity to learn from individuals coping with similar experiences.
- They have a right to maximum opportunity for involvement in all aspects of a center's decision-making process.

Senior center staffs are obliged to create an atmosphere that acknowledges the value of human life, affirms the dignity and self-worth of the older adult, and maintains a climate of respect, trust, and support. Within this atmosphere, staff creates opportunities for older adults to apply their wisdom, experience, and insight, and to exercise their skills.

As an integral part of the aging network, a center serve community needs, assists other agencies in serving older adults, and provides opportunities for older adults to develop their potential as individuals within the context of the entire community.

## DEFINITION OF A SENIOR CENTER

A senior center is a community focal point where older adults come together for services and activities that reflect their experience and skills, respond to their diverse needs and interests, enhance their dignity, support their independence, and encourage their involvement in and with the center and the community.

As part of a comprehensive community strategy to meet the needs of older adults, senior centers offer services and activities within the center and link participants with resources offered by other agencies. Center programs consist of a variety of individual and group service and activities.

The center also serves as a resource for the entire community for information on aging, support for family caregivers, training professional and lay leaders and students, and for development of innovative approaches to addressing aging issues.

**BEAR RIVER HEALTH DEPARTMENT  
"NEW CHOICES" SUBSTANCE ABUSE PROGRAM**

FY 1997-98 ♦ YEAREND

Total number of clients in treatment, including carryovers and new admissions:	1370	Cache/Rich County 928	Box Elder County 442
Male	1074	754	320
Female	296	174	122
Female w/dep. children/pregnant	133	73	60

<b>NEW ADMISSIONS:</b>	931
<b>CARRYOVERS:</b>	439
<b>CLIENTS W/PREVIOUS ADMS:</b>	489
<b>TOTAL DISCHARGES:</b>	985
<b>REASON FOR DISCHARGE</b>	
CTX 417	CNP 57
NC 251	OTH 12
LBT 209	REF 39

<b>REFERRAL SOURCES</b>	
COURT:	1173
SELF:	147
OTHER :	50
(i.e. community, school, employer, mental health, etc....)	

<b>Breakdown of clients in terms of primary reason for treatment:</b>	
ALCOHOL	833
COCAINE	22
MARIJUANA	316
HEROIN/OPIATES	24
HALLUCINOGENS	7
METHAMPHETAMINE	153
BARBITURATES	2
SEDATIVES/HYPNOTICS	2
OVER THE COUNTER	1
NON-USERS	10

<b>IV Drug Users</b>	76
Cache/Rich County	34
Box Elder County	42

<b>Number of clients attending DUI class</b>	156
<b>Court charges for DUI class attendees:</b>	
DUI 112	ARR 19 .08% 3
Not a Drop 7	Public Intoxication 1
MIP 10	Other 4

**YOUTH SERVICES:**

<b>Total number of youth in treatment, including carryovers and new admissions:</b>	197	Cache/Rich County 89	Box Elder County 108
Male	147	74	73
Female	50	15	35
Female w/dep. children/pregnant	3	0	3

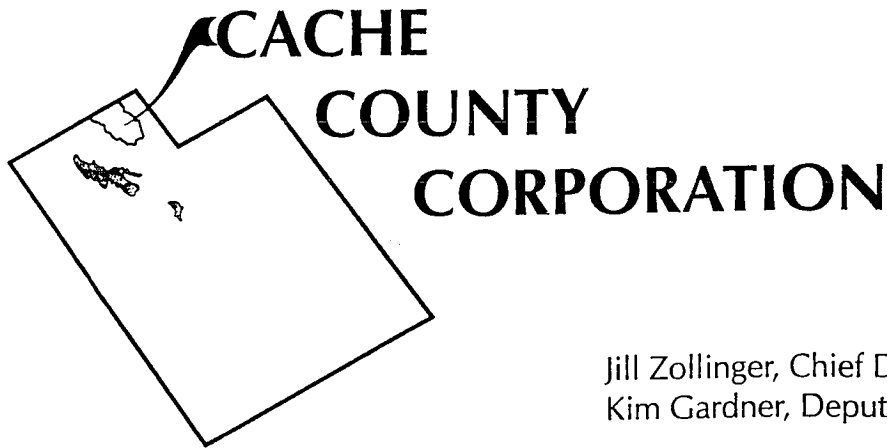
<b>REFERRAL SOURCES FOR YOUTH</b>	
COURT:	155
SCHOOL:	7
OTHER :	35
(i.e. self, family, community, employer, mental health, etc....)	

<b>Breakdown of youth in terms of primary reason for treatment:</b>	
ALCOHOL	62
COCAINE	1
MARIJUANA	115
HEROIN/OPIATES	1
HALLUCINOGENS	2
METHAMPHETAMINE	16
BARBITURATES	0
SEDATIVES/HYPNOTICS	0
NON-USERS	0

<b>Youth IV Drug Users</b>	4
Cache/Rich County	3
Box Elder County	1

**OFFICE OF THE  
COUNTY CLERK**

170 North Main  
Logan, Utah 84321  
Ph. 752-3542

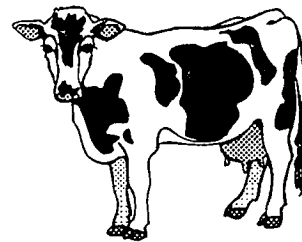


Stephen M. Erickson  
Cache County Clerk

Jill Zollinger, Chief Deputy Clerk  
Kim Gardner, Deputy Clerk

**MEMORANDUM**

**TO: CACHE COUNTY COUNCIL**  
**FROM: STEPHEN M. ERICKSON** *SME*  
**DATE: AUGUST 20, 1998**  
**SUBJECT: COUNTY FAIR ANNUAL REPORT**



This memorandum is intended to give a report of the 1998 Cache County Fair. The report will reflect budget numbers and will review needs and concerns of the fair and Rodeo. However the Rodeo is run by a volunteer committee with their own bylaws and budget and is organized as a non profit entity.

The fair began with some criticism from the Poultry Department regarding their show building. They have a legitimate concern because the building gets too hot for the poultry and they have become sick and some have even died. We solved the problem by agreeing to move them out of the building to the East in a breeze way next to their building. Not a bird was lost and all was well. This was merely a temporary solution. We need to solve the problem before next year.

We have a major problem with the electricity and lighting at the Fairgrounds. Breakers were continually being over loaded and power was lost for long periods of time. Some temporary lights were installed by the fairground manger.

Water back flow devises not being installed in some areas of the fairgrounds is a concern. Apparently the water outlets in the buildings are okay but the outlets for irrigation do not have the devises on yet. It was thought that some of the food booths may be using water from an irrigation outlet. After an investigation it was determined that none were and all was well again.

The above-mentioned problems are being addressed by the Willow Park Advisory Board and by the Logan City Parks and Recreation Department. We hope solutions can be made for future events at the Fairgrounds especially for the 1999 County fair.

We had a great fair, it was well attended and people who attended were rewarded for coming. The weather cooperated, except the last night when it really rained hard. The lights in the Rodeo arena went out for a while but eventually came back on and the Rodeo continued. We were disappointed with the number of Community booths that we had. We have fourteen booth spaces and only six communities were represented. Hyrum City took sweepstake and will represent the County at the State Fair. All exhibits seemed to be a little lower this year except in our youth's departments. They have an increase every year.

The Rodeo was well attended and had outstanding stock and cowboys. They brought in around \$30,000.00

Our office sold more than 230 commercial booths bringing in \$21,935.00. (see attachment)

The carnival, MidWay West Amusements, out of California were good to work with and we had very little complaint. They paid us \$14,986.25.

All our expenditures are not in yet, but we anticipate that we will be within our allocated budget of \$41,800.00.

We appreciate your help and input regarding the County Fair. We are always open for suggestions and want to make the County Fair what it should be and what it should accomplish for the citizens of the County.

**NEXT YEAR DATES: AUGUST 9<sup>TH</sup> THROUGH THE 14<sup>TH</sup>**

# County fair refreshes the soul

By Karen Erickson

**T**oni, Jessica, Casi, and Jena leaned over the table that fronted my booth at the Cache County Fair. Beautiful, young, and displaying tanned midriffs, they reverted to childhood as they wrote their names on the white butcher paper that served both as tablecloth and artistic canvas. Gleefully selecting brightly colored crayons from a Tupperware container, the girls worked to turn their names into artistic calligraphy. Casi sighed as she looked at her efforts; she wore a cast on her right arm and she had difficulty holding the purple crayon, but she gave it her best shot.



I hadn't been to a county fair for over three decades. My memories consisted of cramped crowded dusty arenas, swarms of sweaty humanity, the undefinable smell of "fair food," and hordes of overexcited children. Once upon a time, when I was one of those overexcited kids, I enjoyed the fair. But as I grew older, the crowds became oppressive, carnival rides lost their glamour, and the sticky cotton candy didn't taste as good.

So when I agreed to tend an information booth at the Cache County Fair, I asked the organizer if I needed a parking pass. She told me where to park, but didn't say anything about a parking pass. I asked her if I needed an entry pass. She gave me instructions on how to find the booth, but didn't say anything about an entry pass. Oh well. I figured I could fork over the \$15.00 or so it would cost to "volunteer" at the fair.

However, my memories were of fairs in California. The Stanislaus County Fair of thirty-some years ago had parking attendants, gated entries, and security police to maintain the crowds. The Cache County Fair harkens back to what fairs should be but too often are not. No signs said, "Park here and shuttle to the fair. \$5.00." No entry fee. Manageable crowds. And no one inspected my small ice chest for contraband.

My booth was on the grass, a plum location that offered an unimpeded view of the stage where a variety of entertainers sang their hearts out to a largely indifferent audience. Passersby lingered in front of the booths in a quest for shade, and although they tapped their toes to "Eighteen Wheels and a Dozen Roses," they expended little effort in applause. Remembering my days as a band member, where we played Sousa marches while sweating in heavy uniforms, I applauded whenever my hands weren't distributing crayons and leaflets.

I watched as kids walked by with inflatable bright red lips. Other kids and adults struggled past my booth carrying enormous inflatable aliens in blue, green, and hot-pink. Baby strollers were festooned with white balloons imprinted with red "Cache County Republicans," or blue "USU Alumni Association" slogans.

A lovely young girl, about fifteen years old, walked with her grandparents. A bit gawky, as if her long legs were newly sprouted, she was at the age where she should have been embarrassed to be seen with an older couple. Instead, she strolled between them, chatting and smiling. They leaned toward her — either to catch every word, every laugh, every nuance, or to form a protective arc between her and the crowds. She talked, listened, laughed. They bent inward, like a pair of parentheses encircling their

prized jewel.

A group of lawn-chair toting seniors threaded through throngs of youngsters, ambling across the grass in a quest for shade. Young boys in baggy pants, super-cool sunglasses, and sporting pink faces, smiled at a weary-looking older gentleman wearing red and green plaid shorts and a turquoise tee-shirt. A woman's tee-shirt proclaimed "My son was designed to wrestle." A big dog wearing a multicolored neckerchief towed his master from booth to booth; the dog's leash snaked around the owner's thighs and ankles, and the owner tripped and stumbled behind the dog in an effort to keep up.

As the sun dropped lower in the west and the shade moved away from my chair, I fished ice cubes from my cooler and rubbed them over my legs, arms, face, and neck. I grabbed another one and dropped it in my bra. I smiled at passersby, asked kids if they wanted to draw a picture or sign their names on the butcher paper, and empathized with a couple whose grown children use their house as a storage unit.

The music continued, sometimes fighting for ascendancy against the noise of creaking carnival rides, screaming kids, and the livestock auction. A vocal group called Crimson Rose reflected my sentiments when they sang "Bring me two Pina Colodas."

For three whole hours I ignored my half-finished projects, didn't worry about my parents, and forgot to be disgusted with President Clinton. The Cache County Fair was a spa for the soul. Therapy for the psyche. An antidote to cynicism.

And it didn't cost one red cent.

Logan resident Karen Erickson's column appears on the Opinion page every other Wednesday.

REQUEST FOR INTRA-DEPARTMENT BUDGET TRANSFER

DEPARTMENT: SURVEYOR

DATE: 19 AUGUST 1998

Amount to be Transferred -- ( rounded to the nearest dollar ) \$ 800.00

TRANSFER FROM--

Line Item No. :10-4147-230 TRAVEL - SEMINARS

Fund Designation:

Original Budget \$2000.00
Current Budget \$2000.00
Expenditures to Date \$ 480.00
Balance before Transfer \$ 1520.00
Balance after Transfer \$ 720.00

TRANSFER TO --

Line Item No. : 10-4147-250 EQUIPMENT, SUPPLIES, AND MAINT.

Fund Designation:

Original Budget \$ 2000.00
Current Budget \$ 2000.00
Expenditures to Date \$ 1860.00
Balance before Transfer \$ 140.00
Balance after Transfer \$ 940.00

DESCRIPTION OF NEEDS AND PURPOSE OF TRANSFER

Adjustment for equipment repairs and gas needs to last the rest of the year

[Handwritten signature]

Department Head Approval

RECOMMENDATION: [X] Approval [ ] Disapproval

COMMENTS:

Date: August 19, 1998

[Handwritten signature]
County Auditor

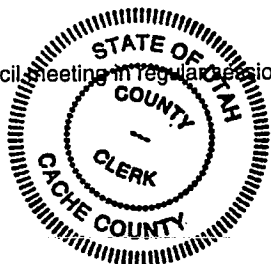
RECOMMENDATION: [X] Approval [ ] Disapproval

COMMENTS:

Date: 8/20/98

[Handwritten signature]
County Executive

Consented by the Cache County Council Meeting in Regular Session on the 25th day of August 1998



[Handwritten signature]
County Clerk

REQUEST FOR INTRA-DEPARTMENTAL BUDGET TRANSFER

DEPARTMENT: Clerk  
DATE: 20-Aug-98

Amount to be transferred -- (rounded to the nearest dollar) \$1,000.00

Transfer From ---  
Line Item No. : 10-4142-311  
Fund Designation: SOFTWARE PACKAGES

Original Budget: \$1,000.00  
Current Budget: \$1,000.00  
Expenditures to date: \$0.00  
Balance before transfer: \$1,000.00  
Balance after Transfer: \$0.00

Transfer To ---  
Line Item No. : 10-4142-740  
Fund Designation: EQUIPMENT

Original Budget: \$0.00  
Current Budget: \$0.00  
Expenditures to date: \$0.00  
Balance before transfer: \$0.00  
Balance after Transfer: \$1,000.00

Description of needs and purpose of transfer ---  
TO REPLACE COMPUTER. Will not operate with upgraded software.

[Signature]  
Department Head

Recommendation: [] Approval [ ] Disapproval  
Comments:

Date: 8/20/98

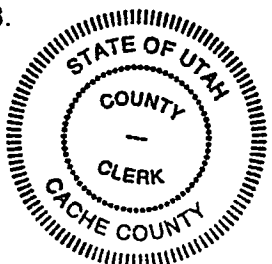
Jamra Stokes  
Cache County Auditor

Recommendation: [] Approval [ ] Disapproval  
Comments:

Date: 8/20/98

M. Kayan Hernandez  
Cache County Executive

Consented by the Cache County Council meeting in regular session on the 23<sup>rd</sup> day of August, 1998.



[Signature]  
Cache County Clerk



**REQUEST FOR INTRA-DEPARTMENTAL BUDGET TRANSFER**

DEPARTMENT: Clerk  
 DATE: 20-Aug-98

Amount to be transferred -- (rounded to the nearest dollar) \$300.00

Transfer From ---  
 Line Item No. : 10-4142-620  
 Fund Designation: MISC SERVICES

Original Budget:	<u>\$3,000.00</u>
Current Budget:	<u>\$3,000.00</u>
Expenditures to date:	<u>\$0.00</u>
Balance before transfer:	<u>\$3,000.00</u>
Balance after Transfer:	<u>\$2,700.00</u>

Transfer To ---  
 Line Item No. : 10-4142-740  
 Fund Designation: EQUIPMENT

Original Budget:	<u>\$1,000.00</u>
Current Budget:	<u>\$1,000.00</u>
Expenditures to date:	<u>\$0.00</u>
Balance before transfer:	<u>\$1,000.00</u>
Balance after Transfer:	<u>\$1,300.00</u>

Description of needs and purpose of transfer ---  
TO REPLACE COMPUTER. Will not operate with upgraded software.

[Signature]  
 Department Head

Recommendation:  Approval [ ] Disapproval  
 Comments:

Date: 8/20/98

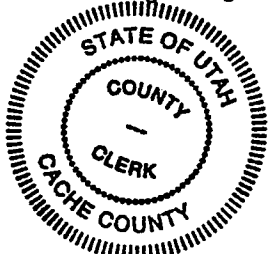
James Stones  
 Cache County Auditor

Recommendation:  Approval [ ] Disapproval  
 Comments:

Date: 8/20/98

M. Lynn Lemon  
 Cache County Executive

Consented by the Cache County Council meeting in regular session on the 25th day of August, 1998.



[Signature]  
 Cache County Clerk

CACHE COUNTY CORPORATION

CHANGED VALUATION REPORT FOR 07/29/98 - 08/25/98

08/25/98

DATE	PARCEL ##	NAME	USER	TIME	C N/O TYPE	NEW/OLD ACRS	NEW/OLD MARKET	NEW/OLD TAXABLE	MARKET	TAXABLE
08/24/98	01-008-0014	BUCK, RULON W & MELV	KATHLEEN	08:48:03	G LS	1.15 1.15	22,900 24,900	22,900 24,900	-2,000	-2,000
08/25/98	01-018-0014	WARDREP, MARY JANE	KATHLEEN	12:29:38	G BR	0.00 0.00	77,900 86,031	42,845 47,315	-8,131	-4,470
08/24/98	01-024-0037	YEATES, RANDALL & TH	KATHLEEN	08:42:15	G LV	0.50 0.50	4,313 10,200	4,315 10,200	-5,887	-5,885
08/25/98	01-024-0058	MILLER, BRUCE E & RH	KATHLEEN	12:23:21	G LV	0.23 0.23	6,000 16,300	6,000 16,300	-10,300	-10,300
08/24/98	01-026-0050	SYLVESTER, JAMES & C	KATHLEEN	08:41:24	G BR	0.00 0.00	84,070 92,410	46,240 50,825	-8,340	-4,585
08/18/98	01-082-0009	BAXTER, DEAN D & CAR	KATHLEEN	16:51:50	G LV	10.65 10.65	6,925 53,250	6,925 53,250	-46,325	-46,325
08/25/98	01-083-0008	BAXTER, DEAN D & CAR	KATHLEEN	12:34:44	G LG LG	27.55 27.55	27,550 55,100	1,710 1,710	-27,550	0
08/25/98	01-083-0011	BAXTER, DEAN D & CAR	KATHLEEN	12:34:44	G LG LG	80.38 80.38	40,190 160,760	5,315 5,315	-120,570	0
08/21/98	02-014-0023	WRIGHT, DALE W & SUS	SHARON_	15:44:39	G LV	0.23 0.00	6,900 0	6,900 0	6,900	6,900
08/24/98	02-075-0016	MELDRUM, CAROL JEAN	KATHLEEN	08:46:47	G BR	0.00 0.00	66,685 73,478	36,675 40,415	-6,793	-3,740
08/24/98	02-075-0016	MELDRUM, CAROL JEAN	KATHLEEN	08:46:48	G LA	2.00 2.00	2,000 13,000	2,000 13,000	-11,000	-11,000
08/25/98	02-081-0003	VAUGHAN, DANA K TR	KATHLEEN	12:33:29	G BR	0.00 0.00	98,285 123,005	54,055 67,655	-24,720	-13,600
08/25/98	02-081-0003	VAUGHAN, DANA K TR	KATHLEEN	12:33:29	G LA	4.00 4.00	10,000 26,000	10,000 26,000	-16,000	-16,000
08/25/98	02-097-0017	UDY, KENT J	KATHLEEN	12:33:03	G BR	0.00 0.00	59,800 89,504	32,890 49,225	-29,704	-16,335
08/24/98	02-102-0020	RINDERKNECHT, ELMER	KATHLEEN	08:47:07	G BA	0.00 0.00	0 72	0 70	-72	-70
08/11/98	02-115-0035	MATHEWS, TONY & TERE	KATHLEEN	14:36:36	G LV	0.00 0.44	0 30,100	0 30,100	-30,100	-30,100
08/11/98	02-115-0035	MATHEWS, TONY & TERE	KATHLEEN	14:36:45	G BR	0.00 0.00	135,089 0	74,300 0	135,089	74,300
08/11/98	02-115-0035	MATHEWS, TONY & TERE	KATHLEEN	14:36:46	G LR	0.44 0.00	30,100 0	16,555 0	30,100	16,555
08/25/98	03-004-0011	DENNEY, ALICE	KATHLEEN	12:23:55	G LV	4.95 4.95	49,500 64,350	49,500 64,350	-14,850	-14,850
08/25/98	03-004-0016	DENNEY, ALICE	KATHLEEN	12:24:05	G LA	5.36 5.36	53,600 69,680	53,600 69,680	-16,080	-16,080
08/24/98	03-020-0025	SELLEY, STEVEN A & F	KATHLEEN	08:40:32	G LV	1.50 1.50	32,500 35,500	32,500 35,500	-3,000	-3,000
08/18/98	03-024-0006	GIBBONS, ROBERT B	KATHLEEN	16:50:59	G LG LG	10.00 10.00	50,000 130,000	3,500 3,500	-80,000	0
08/25/98	03-029-0023	JOHNSON, RICHARD E	KATHLEEN	12:23:41	G LV	2.40 2.40	10,000 31,200	10,000 31,200	-21,200	-21,200
08/06/98	03-065-0020	GUNNELL, LANCE	KATHLEEN	08:42:33	G LV	0.00 19.21	0 192,100	0 192,100	-192,100	-192,100
08/06/98	03-065-0020	GUNNELL, LANCE	KATHLEEN	08:43:07	G LG LG	19.21 0.00	192,100 0	3,945 0	192,100	3,945
08/18/98	03-094-0010	HANSEN, JED L & KATH	KATHLEEN	16:51:27	G BR	0.00 0.00	128,000 167,421	70,400 92,080	-39,421	-21,680
08/18/98	03-096-0002	BAXTER, DEAN D & CAR	KATHLEEN	16:52:00	G BR	0.00 0.00	147,200 168,352	80,960 92,595	-21,152	-11,635
08/24/98	03-121-0010	LE, DUNG HUNG	KATHLEEN	08:47:17	G BR	0.00 0.00	108,000 113,693	59,400 62,530	-5,693	-3,130
08/20/98	04-028-0026	ELDER, ALAN G & LIND	DIXIE__	09:33:52	G LC	0.87 0.89	56,845 56,845	56,845 56,845	0	0
08/20/98	04-048-0014	BERGER, JOSEPH DEWAI	KATHLEEN	09:13:07	G LG LG	14.00 140.00	210,000 210,000	4,900 49,000	0	-44,100
08/04/98	04-060-0028	ECHO CONSTRUCTION IN	KATHLEEN	08:56:46	G LV	0.93 0.57	84,590 84,590	84,590 84,590	0	0
08/18/98	05-090-0003	ECHO PROPERTIES LLC	KATHLEEN	16:50:20	G LV	0.64 0.64	3,200 11,520	3,200 11,520	-8,320	-8,320
08/18/98	05-090-0004	ECHO PROPERTIES LLC	KATHLEEN	16:50:10	G LV	1.06 1.06	5,300 19,080	5,300 19,080	-13,780	-13,780
08/24/98	05-092-0016	CO-AX INC CORPORATIO	KATHLEEN	08:40:22	G LV	0.08 0.08	3,600 12,000	3,600 12,000	-8,400	-8,400
08/25/98	06-087-0008	DEAN, BRUCE A	KATHLEEN	12:33:41	G BR	0.00 0.00	91,200 116,570	50,160 64,115	-25,370	-13,955
08/25/98	07-018-0001	SHOWELL, JEAN MARIE	KATHLEEN	12:55:24	G BR	0.00 0.00	66,966 74,636	36,830 41,050	-7,670	-4,220
08/24/98	07-035-0003	KOLESAR, PETER T & M	KATHLEEN	08:41:17	G BR	0.00 0.00	112,800 143,642	62,040 79,005	-30,842	-16,965
08/24/98	07-120-0013	THATCHER, JAY S & LI	KATHLEEN	08:41:32	G BR	0.00 0.00	90,000 93,626	49,500 51,495	-3,626	-1,995
08/25/98	07-122-0015	JOHNSTON, TERENCE RO	KATHLEEN	12:36:21	G LV	0.00 0.17	0 23,000	0 23,000	-23,000	-23,000
08/25/98	07-122-0015	JOHNSTON, TERENCE RO	KATHLEEN	12:36:34	G BR WM	0.00 0.00	121,480 0	66,815 0	121,480	66,815
08/25/98	07-122-0015	JOHNSTON, TERENCE RO	KATHLEEN	12:36:34	G LR WM	0.17 0.00	24,600 0	13,530 0	24,600	13,530
08/25/98	08-049-0006	FURSE, LARRY & CYNTH	KATHLEEN	12:27:36	G LV	2.00 2.00	19,000 40,000	19,000 40,000	-21,000	-21,000
08/25/98	08-049-0021	FURSE, LARRY & CYNTH	KATHLEEN	12:27:44	G LV	2.64 2.64	19,000 38,200	19,000 38,200	-19,200	-19,200
08/24/98	08-149-0044	BUDGE, LOWELL JENSEN	KATHLEEN	08:47:44	G BR	0.00 0.00	157,250 188,291	86,490 103,560	-31,041	-17,070
08/24/98	08-152-0401	HILLYARD, ROSS D & R	KATHLEEN	08:47:54	G BR	0.00 0.00	163,250 184,978	89,790 101,740	-21,728	-11,950
08/25/98	09-007-0005	SEAMONS, ROBERT S &	KATHLEEN	12:22:34	G BR	0.00 0.00	163,595 192,290	89,975 105,760	-28,695	-15,785
08/13/98	09-024-0012	JORGENSEN, JERRY G T	DIXIE__	09:24:30	G LC	0.15 0.30	8,356 8,356	8,355 8,355	0	0
08/13/98	09-024-0012	JORGENSEN, JERRY G T	DIXIE__	09:24:31	G W4	0.15 0.30	0 0	0 0	0	0
08/04/98	09-062-0058	PRISON, PAUL & ISA	KATHLEEN	09:46:32	G LV	0.00 0.42	0 14,000	0 14,000	-14,000	-14,000
08/04/98	09-062-0058	PRISON, PAUL & ISA	KATHLEEN	09:46:42	G BR	0.00 0.00	82,300 0	45,265 0	82,300	45,265
08/04/98	09-062-0058	PRISON, PAUL & ISA	KATHLEEN	09:46:42	G LR	0.42 0.00	14,000 0	7,700 0	14,000	7,700
08/24/98	10-011-0013	PETERSON, ERIC B AKA	KATHLEEN	08:42:06	G LV	0.00 4.54	0 45,400	0 45,400	-45,400	-45,400
08/24/98	10-011-0013	PETERSON, ERIC B AKA	KATHLEEN	08:42:06	G BA BR	0.00 0.00	18,400 0	18,400 0	18,400	18,400
08/24/98	10-011-0013	PETERSON, ERIC B AKA	KATHLEEN	08:42:06	G LA BR	4.54 0.00	45,400 0	45,400 0	45,400	45,400

6

CACHE COUNTY CORPORATION

CHANGED VALUATION REPORT FOR 07/29/98 - 08/25/98

8/25/98

DATE	PARCEL ##	NAME	USER	TIME	C N/O	TYPE	NEW/OLD ACRS	NEW/OLD MARKET	NEW/OLD TAXABLE	MARKET	TAXABLE
8/24/98	10-011-0030	PETERSON, ERIC B AKA	KATHLEEN	08:41:41	G	BA	0.00 0.00	0 18,400	0 18,400	-18,400	-18,400
8/25/98	10-024-0005	GITTINS, RUTH J	KATHLEEN	12:23:49	G	BR	0.00 0.00	77,545 107,499	42,650 59,125	-29,954	-16,475
8/24/98	10-042-0014	JONES, REID H TR	KATHLEEN	08:41:00	G	BA	0.00 0.00	39,855 33,854	39,855 33,855	6,001	6,000
8/24/98	10-042-0015	JONES, REID H TR	KATHLEEN	08:41:08	G	BA	0.00 0.00	0 6,000	0 6,000	-6,000	-6,000
8/25/98	10-046-0013	BAILEY, JOSEPH PAUL	KATHLEEN	12:34:44	G	LG LG	12.26 12.26	42,910 112,600	2,745 2,745	-69,690	0
8/24/98	10-046-0014	BAILEY, MARK & POLLY	KATHLEEN	08:42:31	G	LV	10.00 10.00	50,000 100,000	50,000 100,000	-50,000	-50,000
8/24/98	10-070-0016	POLLOCK, STANLEY W &	KATHLEEN	08:47:28	G	BR	0.00 0.00	102,000 112,583	56,100 61,920	-10,583	-5,820
8/25/98	11-004-0025	DAUGS, DONALD R	KATHLEEN	12:27:27	G	LA	0.00 4.13	0 17,200	0 17,200	-17,200	-17,200
8/25/98	11-004-0025	DAUGS, DONALD R	KATHLEEN	12:27:27	G	LS	3.44 0.00	17,200 0	17,200 0	17,200	17,200
8/18/98	11-005-0001	LEATHAM, REX T	KATHLEEN	16:49:48	G	LA	9.17 9.17	20,775 45,850	20,775 45,850	-25,075	-25,075
8/06/98	11-016-0025	BARRETT, BERYL B TR	KATHLEEN	08:45:54	G	LS	0.00 1.49	0 0	0 0	0	0
8/24/98	11-018-0028	FURSE, LARRY & CINDY	KATHLEEN	08:40:45	G	BA	0.00 0.00	0 827	0 825	-827	-825
8/24/98	11-018-0028	FURSE, LARRY & CINDY	KATHLEEN	08:40:45	G	BR	0.00 0.00	38,000 61,302	20,900 33,715	-23,302	-12,815
8/25/98	11-030-0013	ISRAELSEN, FLOYD V &	KATHLEEN	12:34:44	G	LG LG	2.50 2.50	1,250 8,750	100 500	-7,500	-400
8/25/98	11-037-0013	BODRERO, ODELL E & P	KATHLEEN	12:22:50	G	LV	10.09 10.09	25,225 65,585	25,225 65,585	-40,360	-40,360
08/25/98	11-039-0006	LEISHMAN, BRUCE & CA	KATHLEEN	12:34:44	G	LG LG	20.58 20.58	51,450 102,900	4,910 4,910	-51,450	0
08/25/98	11-040-0008	BFL ASSOCIATES	KATHLEEN	12:23:05	G	LV	40.00 40.00	15,710 30,000	15,710 30,000	-14,290	-14,290
08/25/98	11-048-0008	ELIASON, THAYLE R &	KATHLEEN	12:32:54	G	BR	0.00 0.00	119,500 123,975	65,725 68,185	-4,475	-2,460
08/25/98	11-053-0011	ANDERSON, BLAINE L &	KATHLEEN	12:34:45	G	LG LG	92.00 92.00	94,260 230,000	19,420 19,420	-135,740	0
08/25/98	11-081-0023	COLEMAN, BRUCE J & M	KATHLEEN	12:29:31	G	BR	0.00 0.00	66,045 84,951	36,325 46,725	-18,906	-10,400
08/25/98	11-083-0010	ANDERSON, BLAINE L &	KATHLEEN	12:23:33	G	LS	1.01 1.01	10,000 19,961	10,000 19,960	-9,961	-9,960
08/25/98	11-086-0021	MEANS, STEPHEN J & B	KATHLEEN	12:32:43	G	BR	0.00 0.00	139,200 145,490	76,560 80,020	-6,290	-3,460
08/25/98	11-110-0010	SINQUEFIELD, MELVIN	KATHLEEN	12:29:50	G	BR	0.00 0.00	229,450 259,570	126,200 142,765	-30,120	-16,565
08/14/98	11-114-0008	JAMES, MILLARD ELMER	KATHLEEN	15:30:27	G	BR	0.00 0.00	0 111,801	0 61,490	-111,801	-61,490
08/14/98	11-114-0008	JAMES, MILLARD ELMER	KATHLEEN	15:30:27	G	LR	0.00 0.77	0 33,900	0 18,645	-33,900	-18,645
08/14/98	11-114-0008	JAMES, MILLARD ELMER	KATHLEEN	15:30:27	G	LV	0.77 0.00	10,170 0	10,170 0	10,170	10,170
08/14/98	11-114-0009	JAMES, MILLARD ELMER	KATHLEEN	15:31:22	G	LV	0.00 1.41	0 11,310	0 11,310	-11,310	-11,310
08/14/98	11-114-0009	JAMES, MILLARD ELMER	KATHLEEN	15:31:22	G	LS LR	0.41 0.00	2,050 0	2,050 0	2,050	2,050
08/14/98	11-114-0009	JAMES, MILLARD ELMER	KATHLEEN	15:31:38	G	BR LR	0.00 0.00	111,801 0	61,490 0	111,801	61,490
08/14/98	11-114-0009	JAMES, MILLARD ELMER	KATHLEEN	15:31:38	G	LR	1.00 0.00	22,000 0	12,100 0	22,000	12,100
08/25/98	15-031-0026	BUTTARS, DEVON A & S	KATHLEEN	12:32:32	G	BA	0.00 0.00	0 323	0 325	-323	-325
08/25/98	15-031-0026	BUTTARS, DEVON A & S	KATHLEEN	12:32:32	G	BR	0.00 0.00	42,280 60,698	23,255 33,385	-18,418	-10,130
08/25/98	15-031-0026	BUTTARS, DEVON A & S	KATHLEEN	12:32:32	G	LR	0.62 0.62	12,720 6,179	6,995 3,400	6,541	3,595

-942,803 -668,215

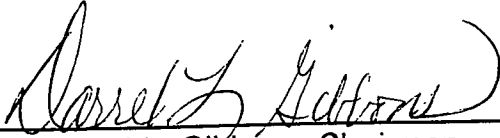
GRAND TOTAL CHANGES

August 25, 1998

PARCELS WITH CHANGED VALUATIONS  
CACHE COUNTY UTAH

Page 3

The above listing was approved by the Cache County Council on the 25<sup>th</sup> day of August, 1998



By: Darrel L. Gibbons, Chairman

ATTEST:



By: Tamra Stones, Clerk of Board of Equalization

Dated 8/25/98