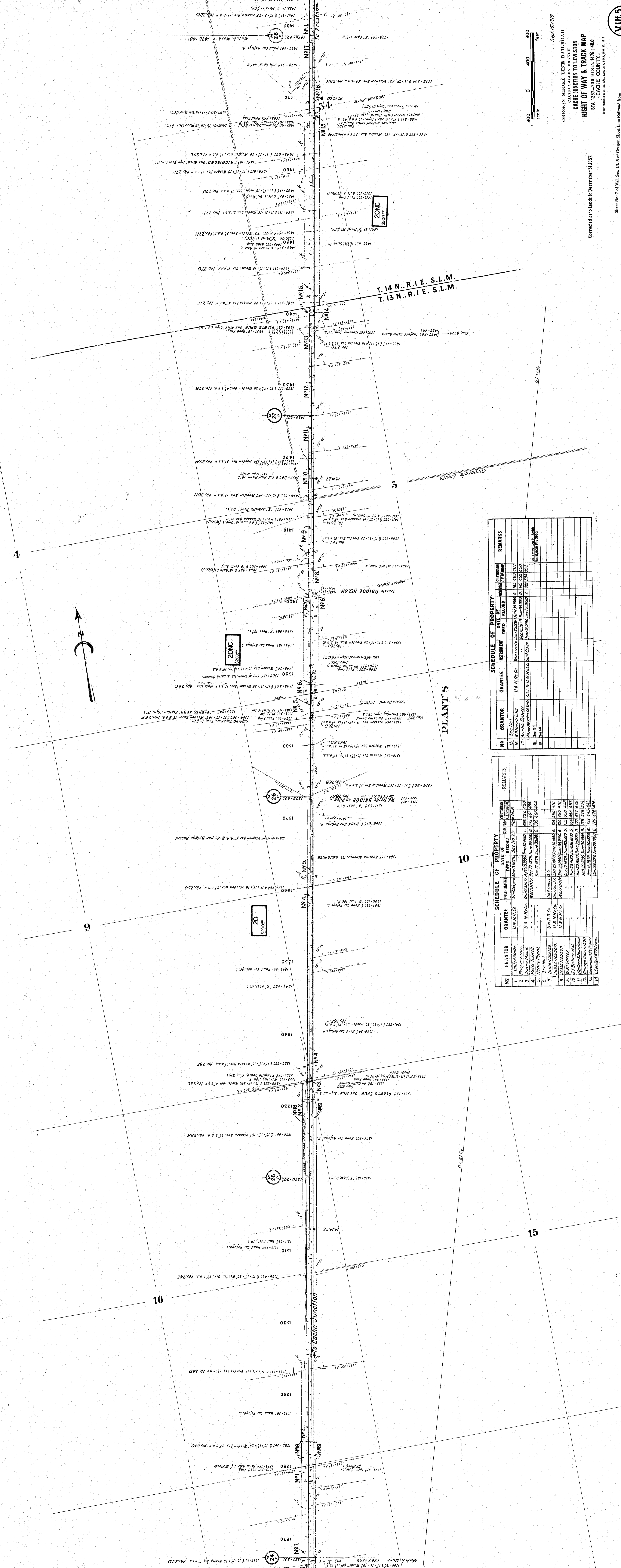


Sept. 17, 1917
 OREGON SHORT LINE RAILROAD
 SHERMAN BRANCH
 CACHE JUNCTION TO LEWISTON
RIGHT OF WAY & TRACK MAP
 STA. 1267+00 TO STA. 1478+00
 CACHE COUNTY



Sheet No. 7 of Vol. Sec. 11, 5 of Oregon Short Line Railroad from survey station 0+00.00 to station 1792+27.0
 Chief Engineer

Corrected as to lands to December 31, 1917.



NO	GRANTOR	GRANTEE	INSTRUMENT	SCHEDULE OF PROPERTY		REMARKS
				DEED	RECORD	
15	U.S. No. 1	U.S. No. 1	U.S. No. 1	105,483	1487	
16	U.S. No. 2	U.S. No. 2	U.S. No. 2	149,452	1450	
17	U.S. No. 3	U.S. No. 3	U.S. No. 3	149,452	1502	

NO	GRANTOR	GRANTEE	INSTRUMENT	SCHEDULE OF PROPERTY		REMARKS
				DEED	RECORD	
1	United States	U.S. No. 1	U.S. No. 1	105,483	1487	
2	Prosser & Co.	U.S. No. 2	U.S. No. 2	149,452	1450	
3	Prosser & Co.	U.S. No. 3	U.S. No. 3	149,452	1502	
4	Prosser & Co.	U.S. No. 4	U.S. No. 4	149,452	1502	
5	Prosser & Co.	U.S. No. 5	U.S. No. 5	149,452	1502	
6	Prosser & Co.	U.S. No. 6	U.S. No. 6	149,452	1502	
7	Prosser & Co.	U.S. No. 7	U.S. No. 7	149,452	1502	
8	Prosser & Co.	U.S. No. 8	U.S. No. 8	149,452	1502	
9	Prosser & Co.	U.S. No. 9	U.S. No. 9	149,452	1502	
10	Prosser & Co.	U.S. No. 10	U.S. No. 10	149,452	1502	
11	Prosser & Co.	U.S. No. 11	U.S. No. 11	149,452	1502	
12	Prosser & Co.	U.S. No. 12	U.S. No. 12	149,452	1502	
13	Prosser & Co.	U.S. No. 13	U.S. No. 13	149,452	1502	
14	Prosser & Co.	U.S. No. 14	U.S. No. 14	149,452	1502	

