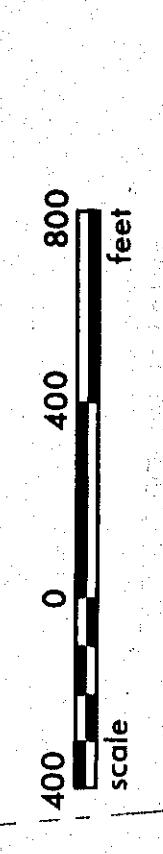


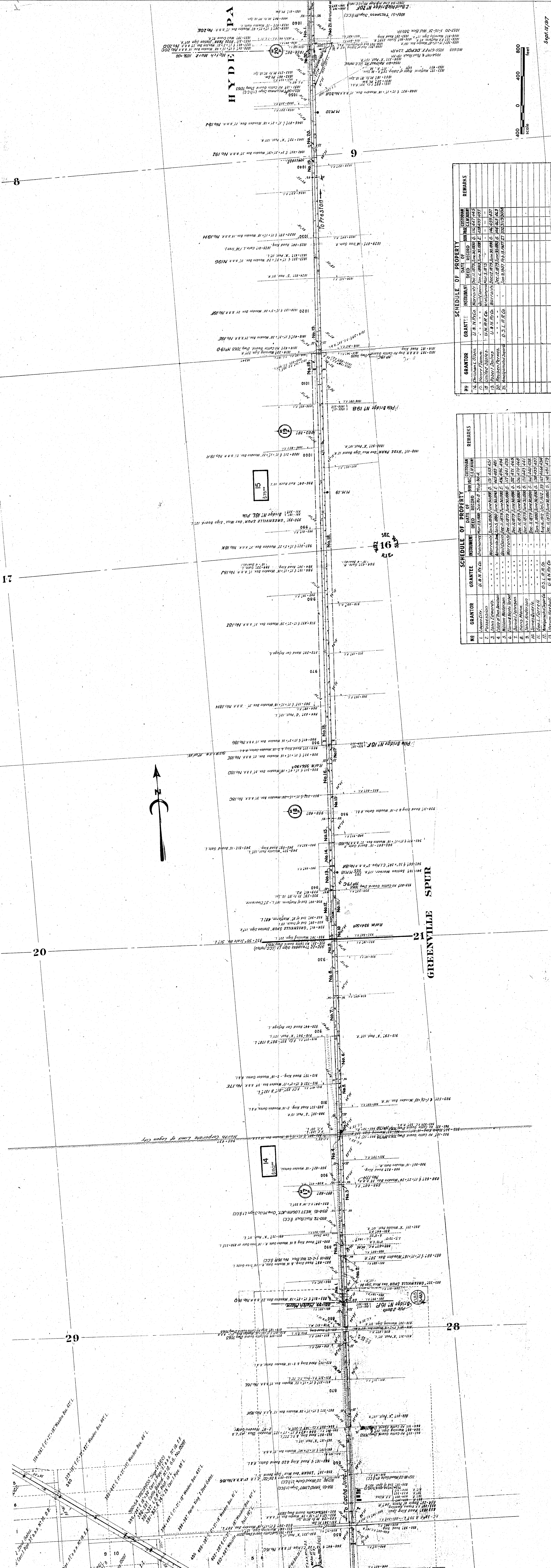
Sheet No. 5 of Vol. Sec. Ut. 5 of Oregon Short Line Railroad from
survey station 0+00.0 to station 1792+27.0

Chief Engineer



No.	GRANTOR	INSTRUMENT	DATE OF DEED	ACRES	REMARKS
1	Logan City	U.S. Pat. No. 1234	1880	100	
2	Prosser & Co.	U.S. Pat. No. 5678	1890	200	
3	John Edwards	U.S. Pat. No. 9012	1900	300	
4	Chas. F. Jones	U.S. Pat. No. 3456	1910	400	
5	William Patterson	U.S. Pat. No. 7890	1920	500	
6	Thomas Nelson	U.S. Pat. No. 1234	1930	600	
7	James Davidson	U.S. Pat. No. 5678	1940	700	
8	John Anderson	U.S. Pat. No. 9012	1950	800	
9	John Anderson	U.S. Pat. No. 3456	1960	900	
10	James Davidson	U.S. Pat. No. 7890	1970	1000	
11	John L. Smith	U.S. Pat. No. 1234	1980	1100	
12	William Patterson	U.S. Pat. No. 5678	1990	1200	
13	Thomas Nelson	U.S. Pat. No. 9012	2000	1300	
14	James Davidson	U.S. Pat. No. 3456	2010	1400	
15	John Anderson	U.S. Pat. No. 7890	2020	1500	

No.	GRANTOR	INSTRUMENT	DATE OF DEED	ACRES	REMARKS
16	John Anderson	U.S. Pat. No. 1234	2030	1600	
17	James Davidson	U.S. Pat. No. 5678	2040	1700	
18	Thomas Nelson	U.S. Pat. No. 9012	2050	1800	
19	John Anderson	U.S. Pat. No. 3456	2060	1900	
20	James Davidson	U.S. Pat. No. 7890	2070	2000	
21	Thomas Nelson	U.S. Pat. No. 1234	2080	2100	



HYDE PA

8

21

21

20

14

29

9

28

9